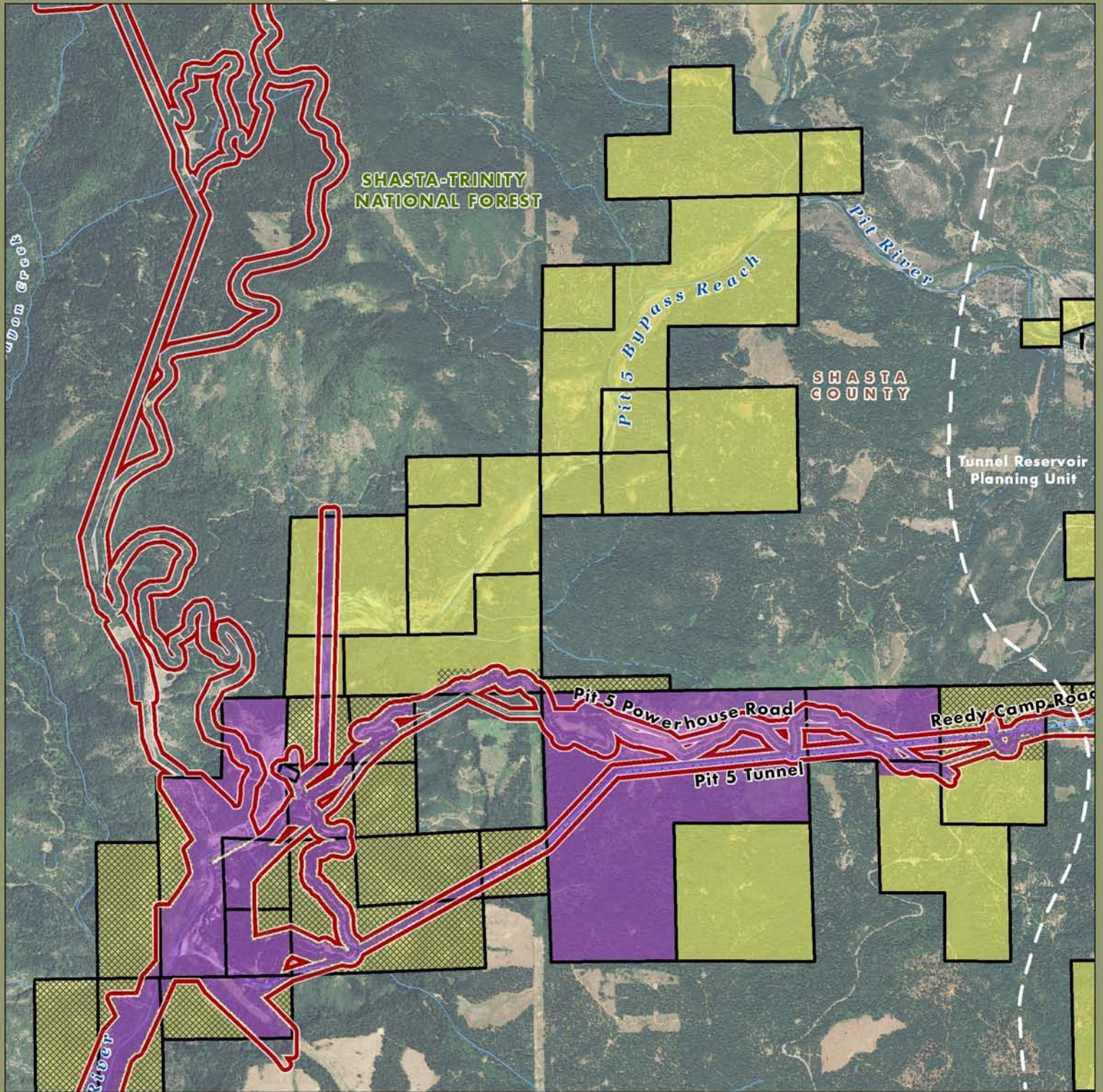
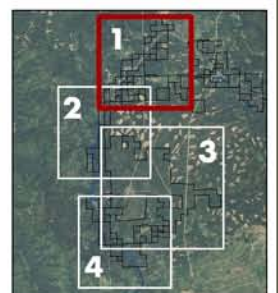


# Pit River Planning Unit: Map 1

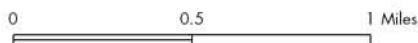


- PG&E Lands Preliminarily Designated for Donation
- Certain Considerations May Make Donation Inadvisable
- PG&E Lands Preliminarily Designated for Retention
- FERC Boundary

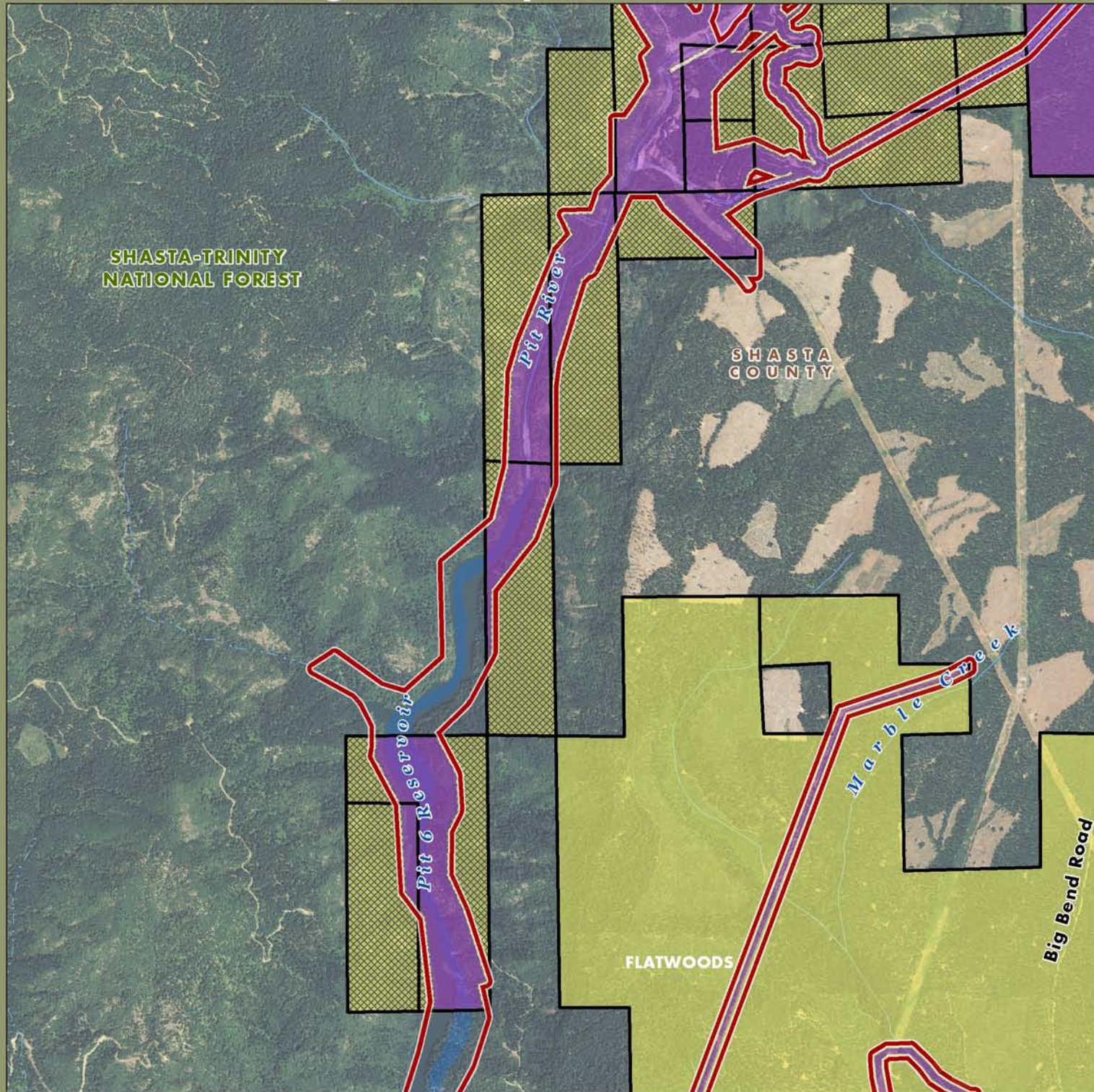
Imagery: NIAP 2009



Acreeage and location of lands preliminarily designated for retention by PG&E outside the FERC boundary are approximate. FERC boundary is approximate and may change over time.



# Pit River Planning Unit: Map 2

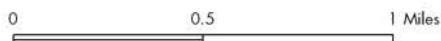


- |  |  |
|--|--|
|  PG&E Lands Preliminarily Designated for Donation  |  Certain Considerations May Make Donation Inadvisable |
|  PG&E Lands Preliminarily Designated for Retention |  FERC Boundary  |

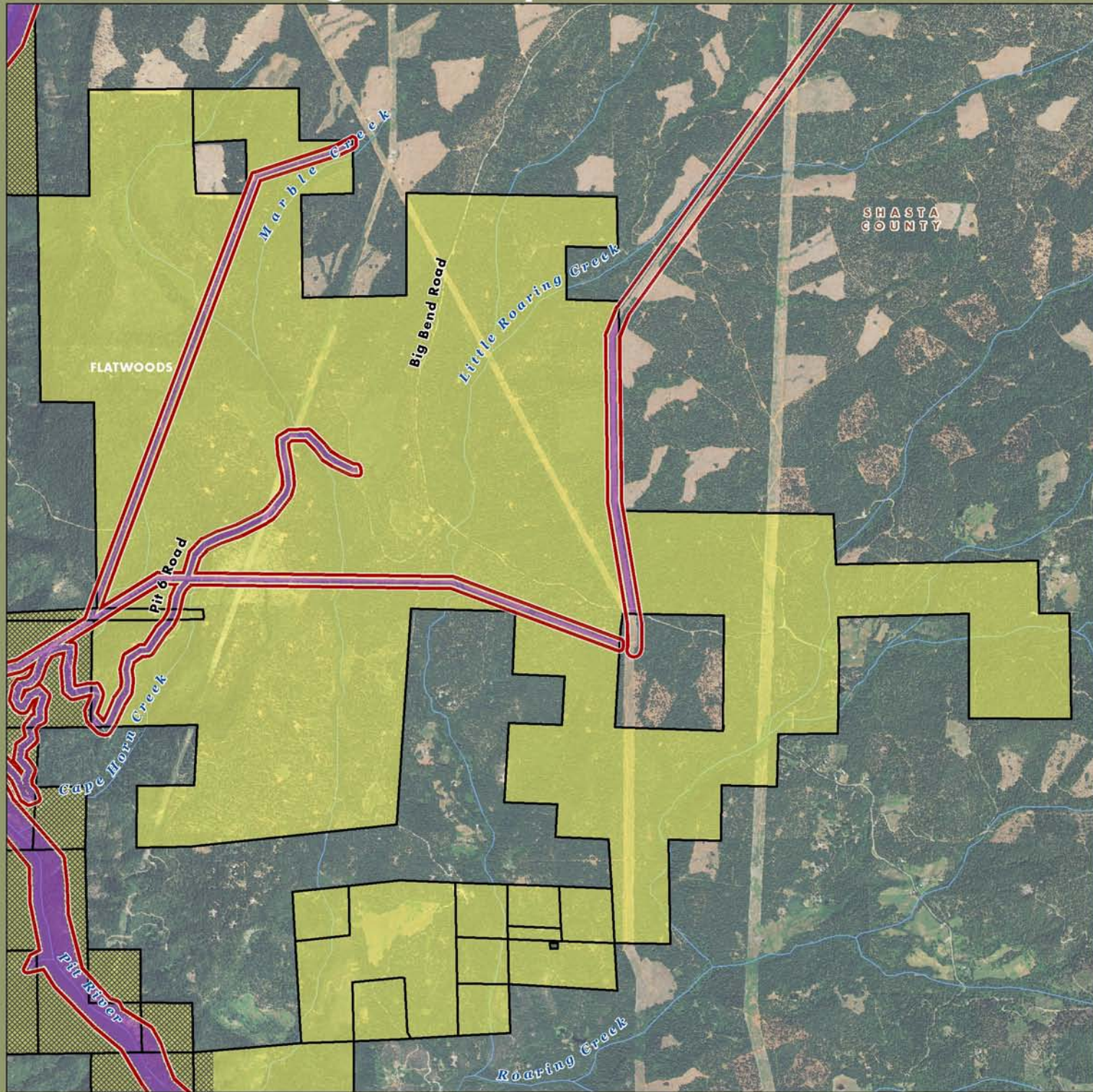
Imagery: NIAP 2009




Acreage and location of lands preliminarily designated for retention by PG&E outside the FERC boundary are approximate. FERC boundary is approximate and may change over time.



# Pit River Planning Unit: Map 3



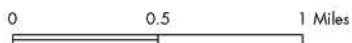
 PG&E Lands Preliminarily Designated for Donation

 Certain Considerations May Make Donation Inadvisable

 PG&E Lands Preliminarily Designated for Retention

 FERC Boundary

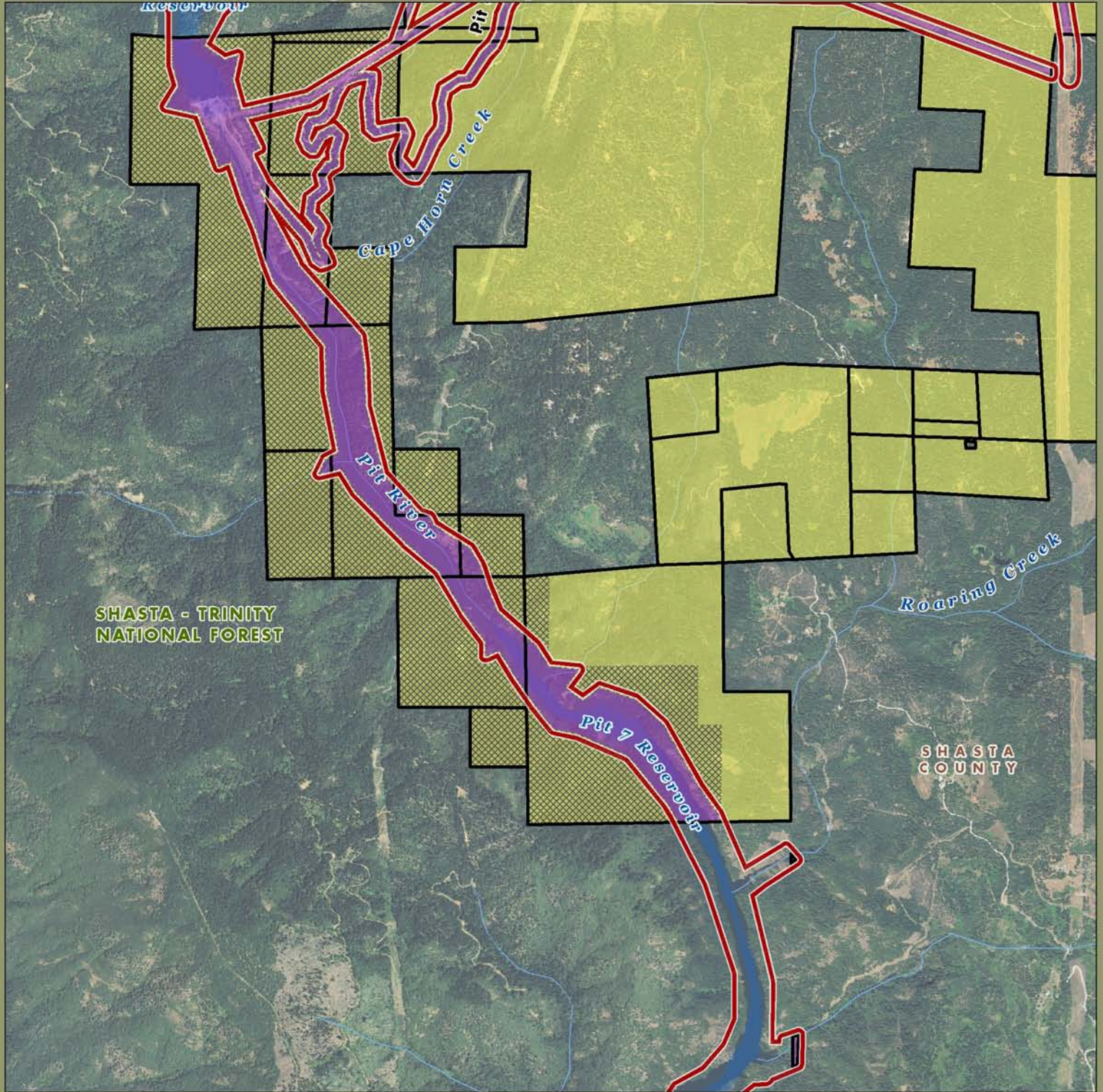
Acreeage and location of lands preliminarily designated for retention by PG&E outside the FERC boundary are approximate. FERC boundary is approximate and may change over time.



Imagery: NIAP 2009



# Pit River Planning Unit: Map 4



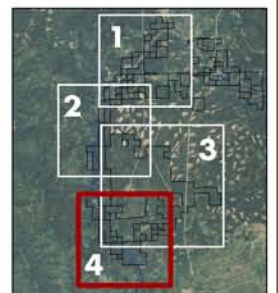
PG&E Lands Preliminarily Designated for Donation

Certain Considerations May Make Donation Inadvisable

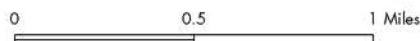
PG&E Lands Preliminarily Designated for Retention

FERC Boundary

Imagery: NIAP 2009



Acreage and location of lands preliminarily designated for retention by PG&E outside the FERC boundary are approximate. FERC boundary is approximate and may change over time.



October 2010  
**AECOM**