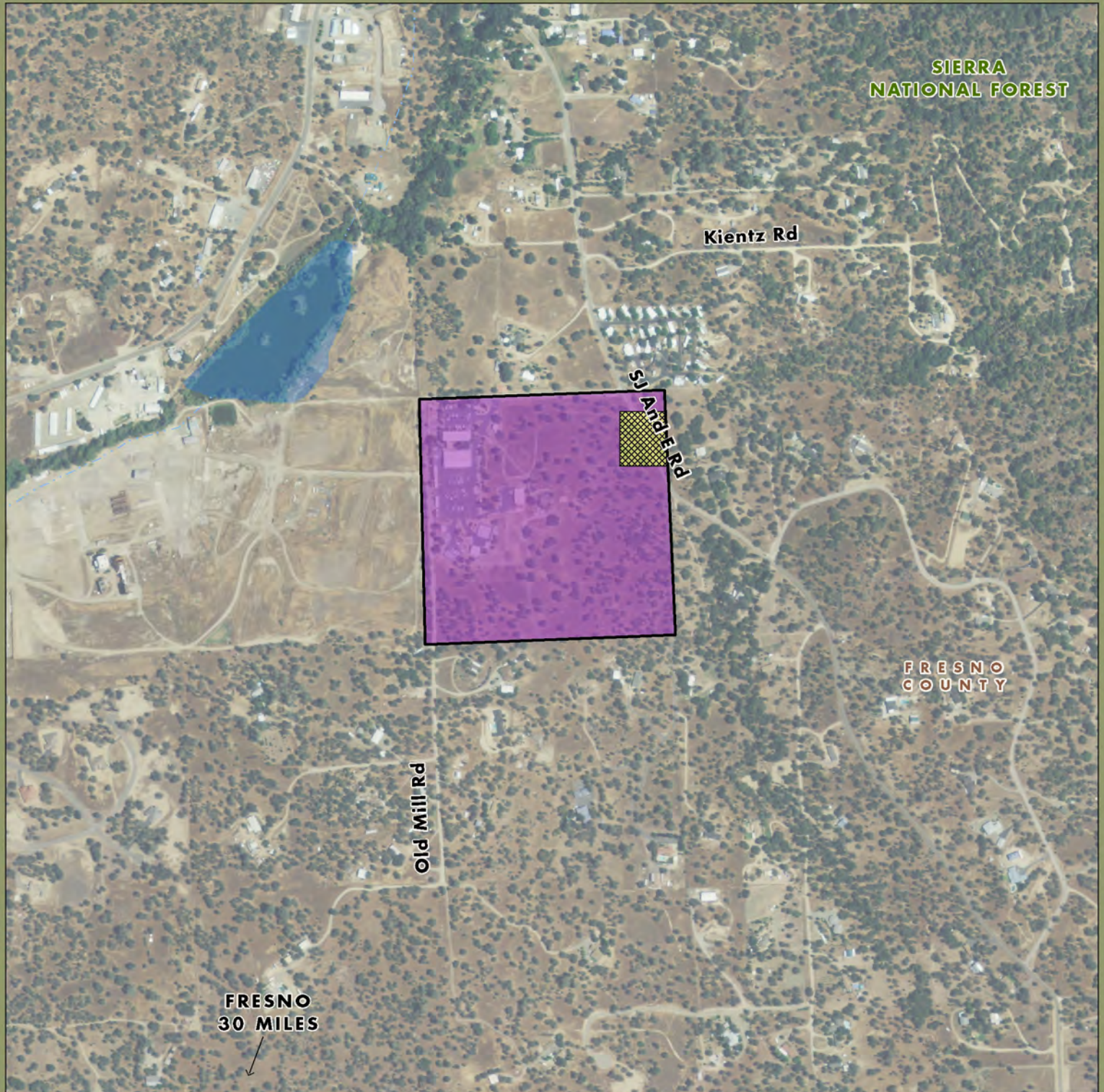


# Auberry Service Center Planning Unit



-  PG&E Lands Preliminarily Designated for Retention
-  Constrained Land - Previously Identified as Available for Donation. **Recommended for Retention by PG&E.**

Imagery: NAIP 2009

Acreage and location of lands preliminarily designated for retention by PG&E outside the FERC boundary are approximate. FERC boundary is approximate and may change over time.

