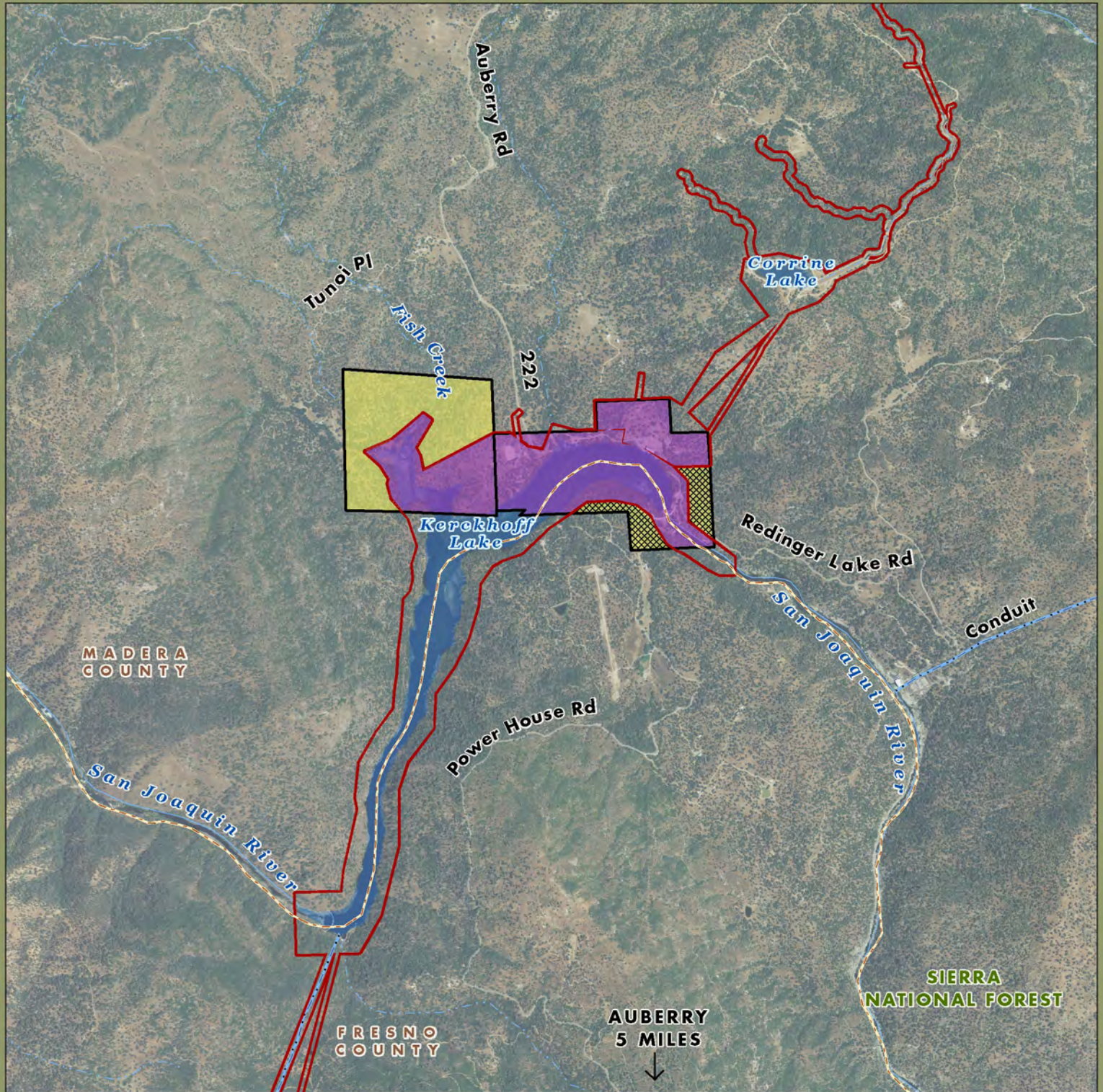






Kerckhoff Lake Planning Unit

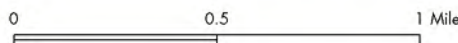


-  PG&E Lands Preliminarily Designated for Donation
-  PG&E Lands Preliminarily Designated for Retention

-  Certain Considerations May Make Donation Inadvisable
-  FERC Boundary

Imagery: NAIP 2009

Acreage and location of lands preliminarily designated for retention by PG&E outside the FERC boundary are approximate. FERC boundary is approximate and may change over time.



April 2011