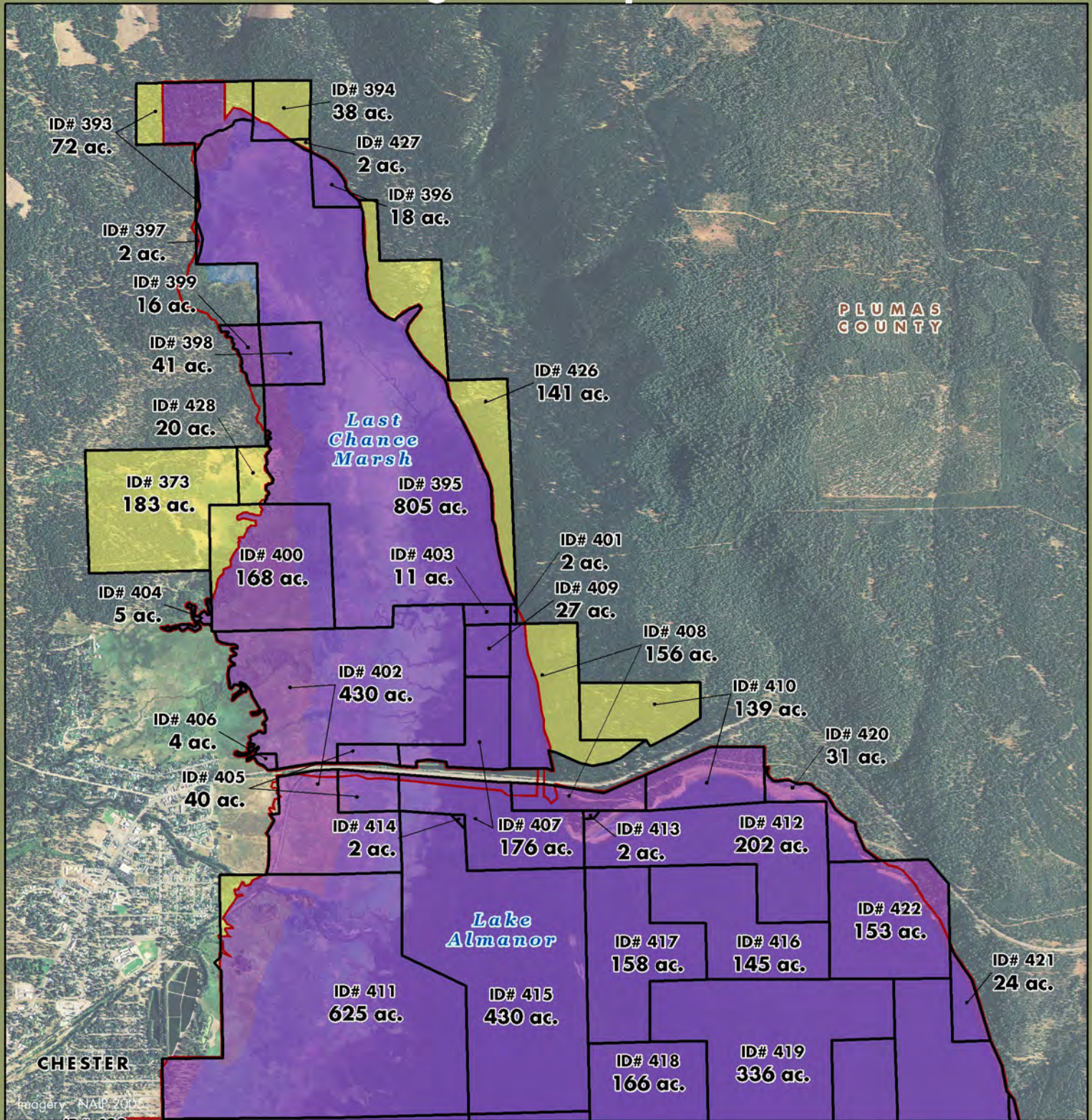
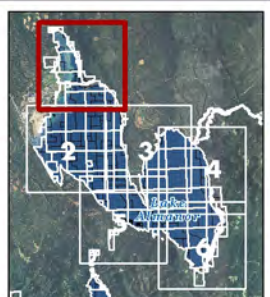
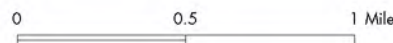


Lake Almanor Planning Unit: Map 1

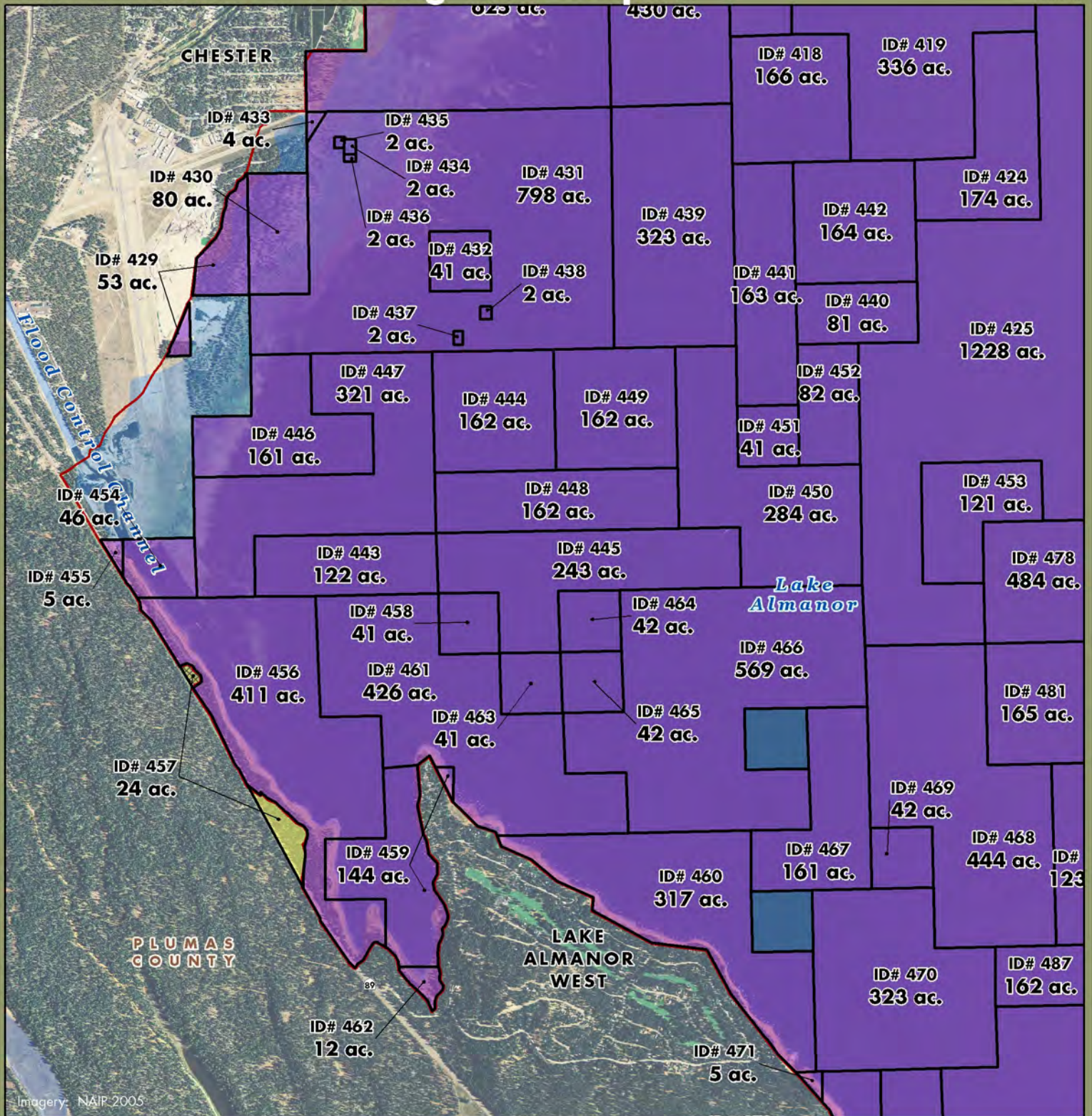


- PG&E Lands Preliminarily Designated for Donation
- PG&E Lands Preliminarily Designated for Retention
- Certain Conditions May Make Donation Inadvisable
- FERC Boundary

Acreage and location of lands preliminarily designated for retention by PG&E outside the FERC boundary are approximate. FERC boundary is approximate and may change over time.



Lake Almanor Planning Unit: Map 2

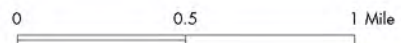


Imagery: NAIP 2005

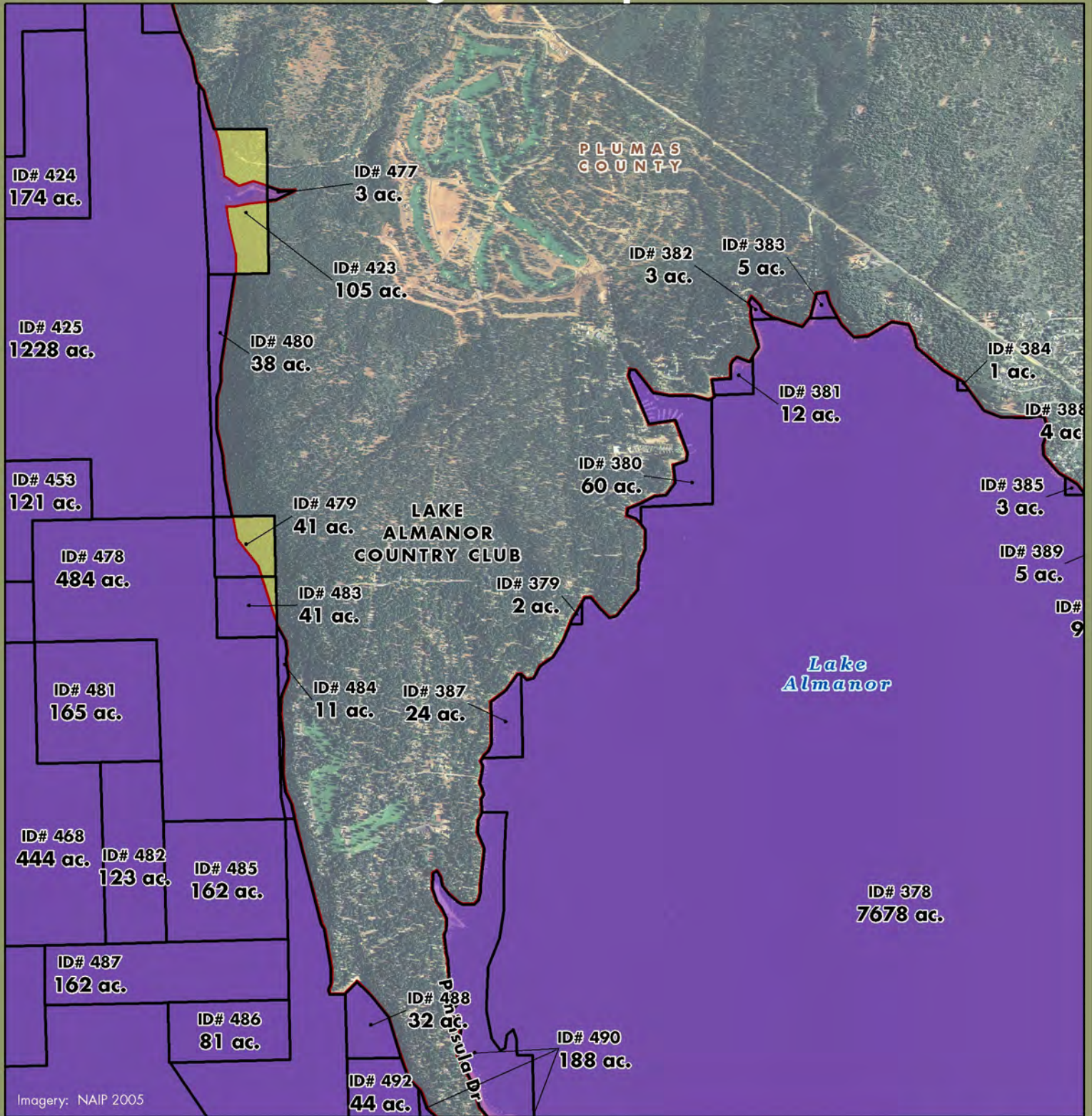
- PG&E Lands Preliminarily Designated for Donation
- PG&E Lands Preliminarily Designated for Retention
- Certain Conditions May Make Donation Inadvisable

FERC Boundary




Acreage and location of lands preliminarily designated for retention by PG&E outside the FERC boundary are approximate. FERC boundary is approximate and may change over time.



Lake Almanor Planning Unit: Map 3

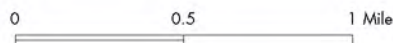


Imagery: NAIP 2005

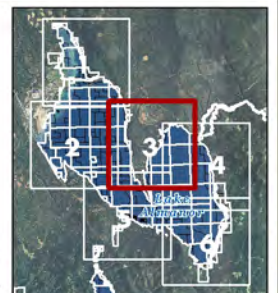
-  PG&E Lands Preliminarily Designated for Donation
-  PG&E Lands Preliminarily Designated for Retention
-  Certain Conditions May Make Donation Inadvisable

 FERC Boundary

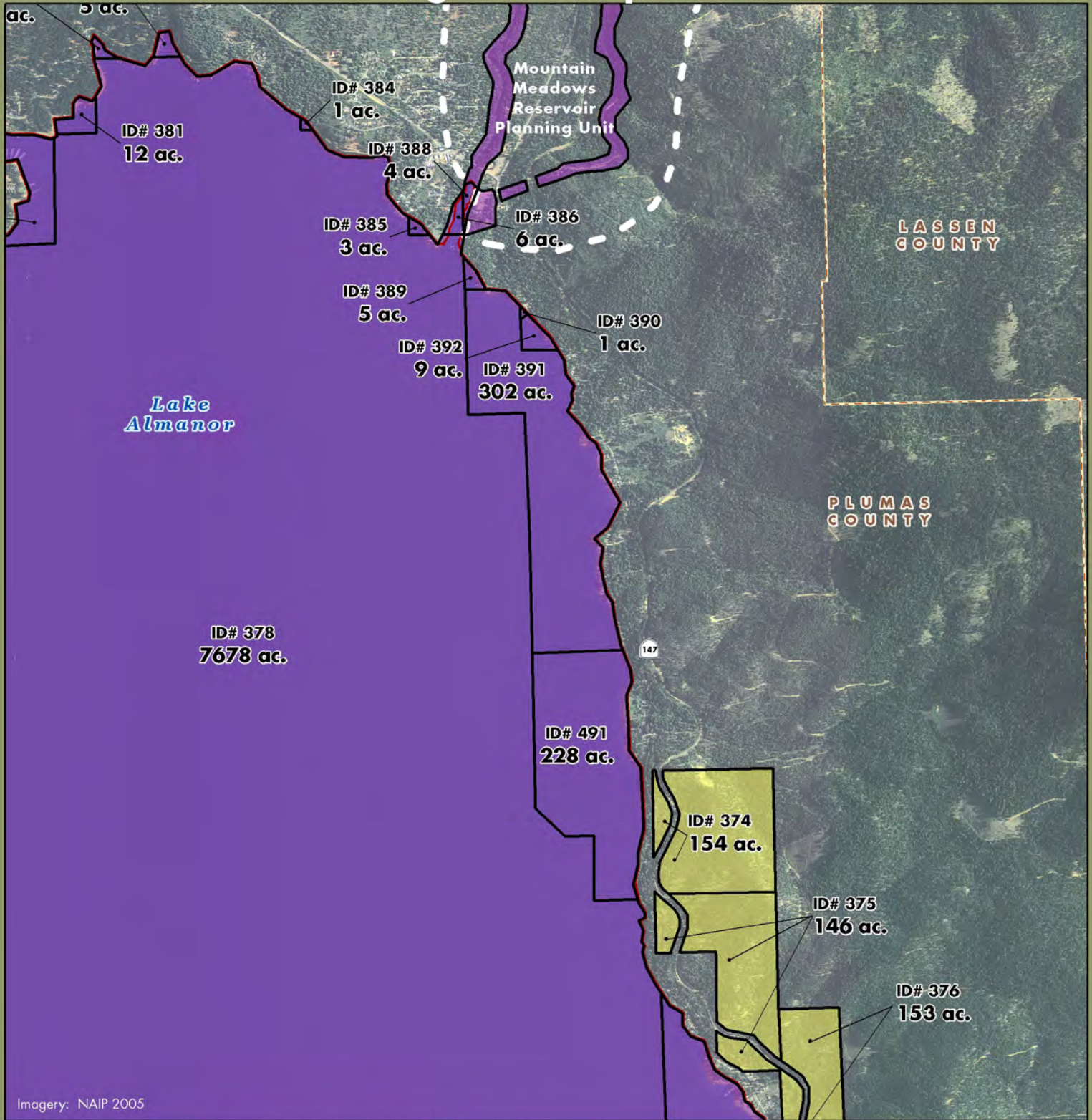
Acreage and location of lands preliminarily designated for retention by PG&E outside the FERC boundary are approximate. FERC boundary is approximate and may change over time.






April 2011
AECOM



Lake Almanor Planning Unit: Map 4

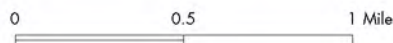


Imagery: NAIP 2005

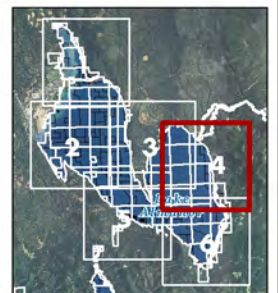
-  PG&E Lands Preliminarily Designated for Donation
-  PG&E Lands Preliminarily Designated for Retention
-  Certain Conditions May Make Donation Inadvisable

 FERC Boundary

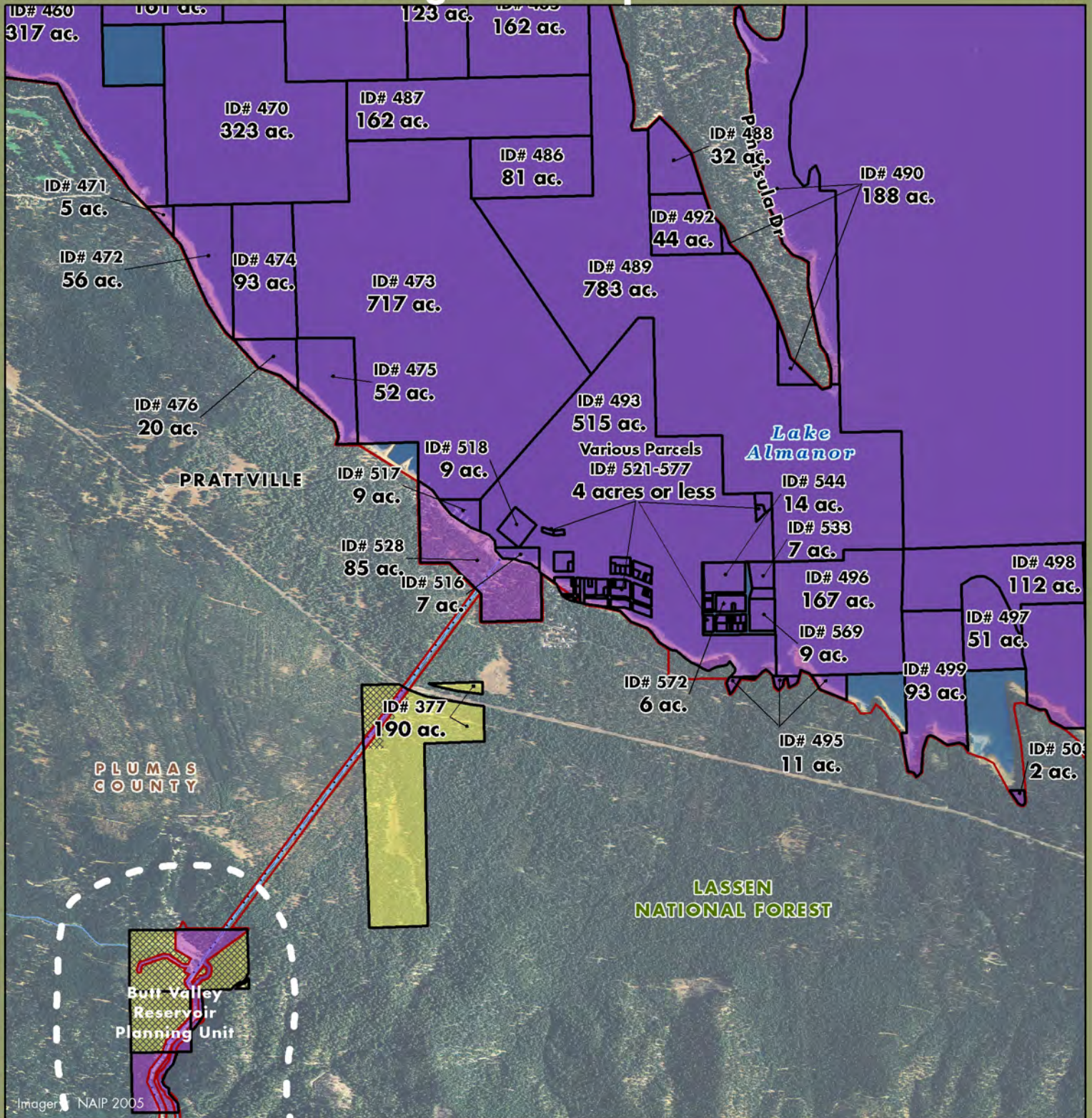
Acreage and location of lands preliminarily designated for retention by PG&E outside the FERC boundary are approximate. FERC boundary is approximate and may change over time.



April 2011
AECOM

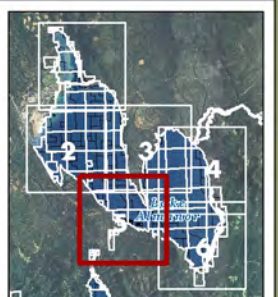
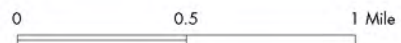


Lake Almanor Planning Unit: Map 5

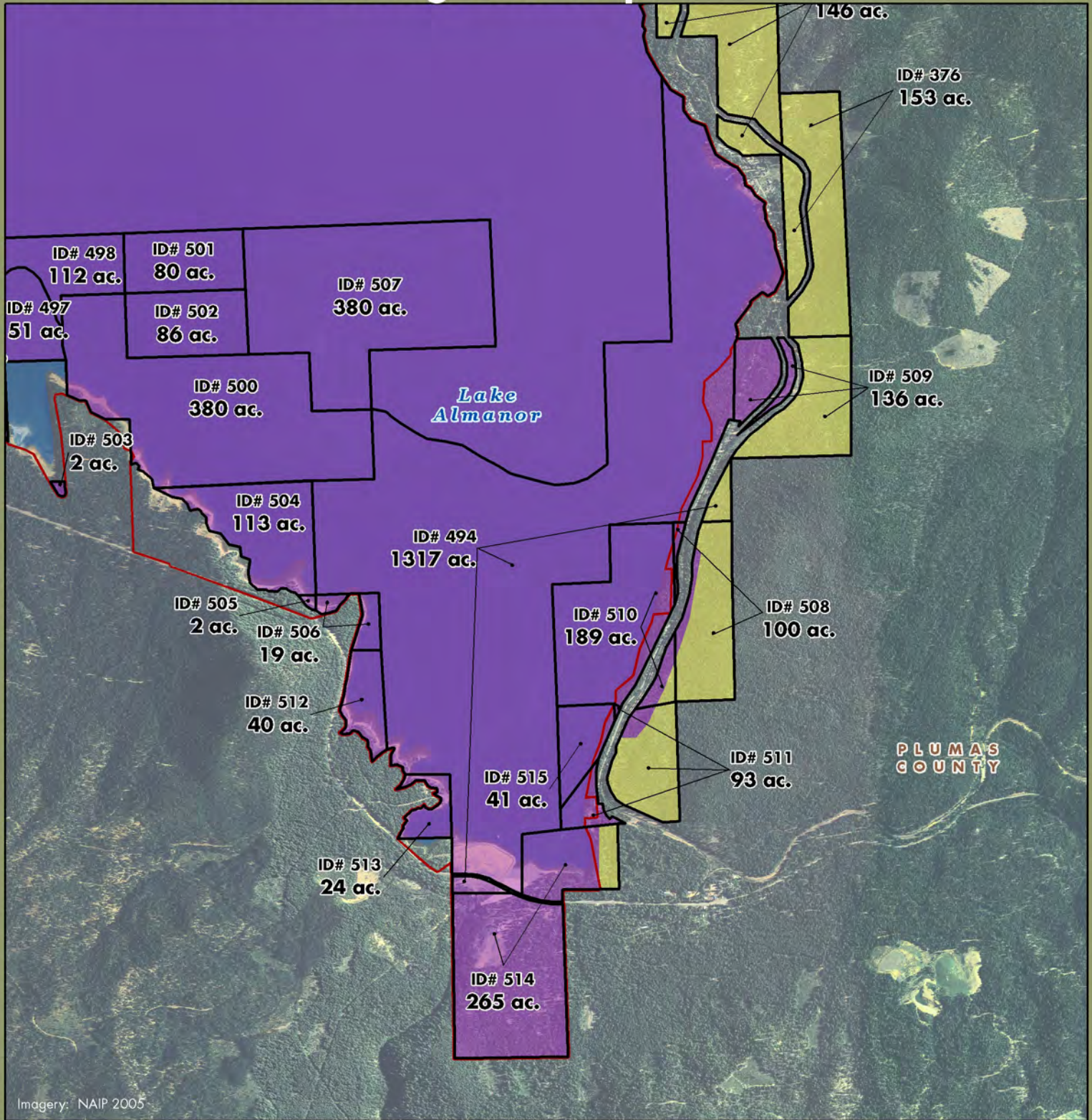


- PG&E Lands Preliminarily Designated for Donation
- PG&E Lands Preliminarily Designated for Retention
- Certain Conditions May Make Donation Inadvisable
- FERC Boundary




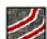
Acreage and location of lands preliminarily designated for retention by PG&E outside the FERC boundary are approximate. FERC boundary is approximate and may change over time.



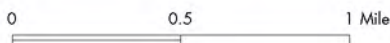
Lake Almanor Planning Unit: Map 6



Imagery: NAIP 2005

-  PG&E Lands Preliminarily Designated for Donation
-  PG&E Lands Preliminarily Designated for Retention
-  Certain Conditions May Make Donation Inadvisable
-  FERC Boundary

Acreage and location of lands preliminarily designated for retention by PG&E outside the FERC boundary are approximate. FERC boundary is approximate and may change over time.



April 2011
AECOM

