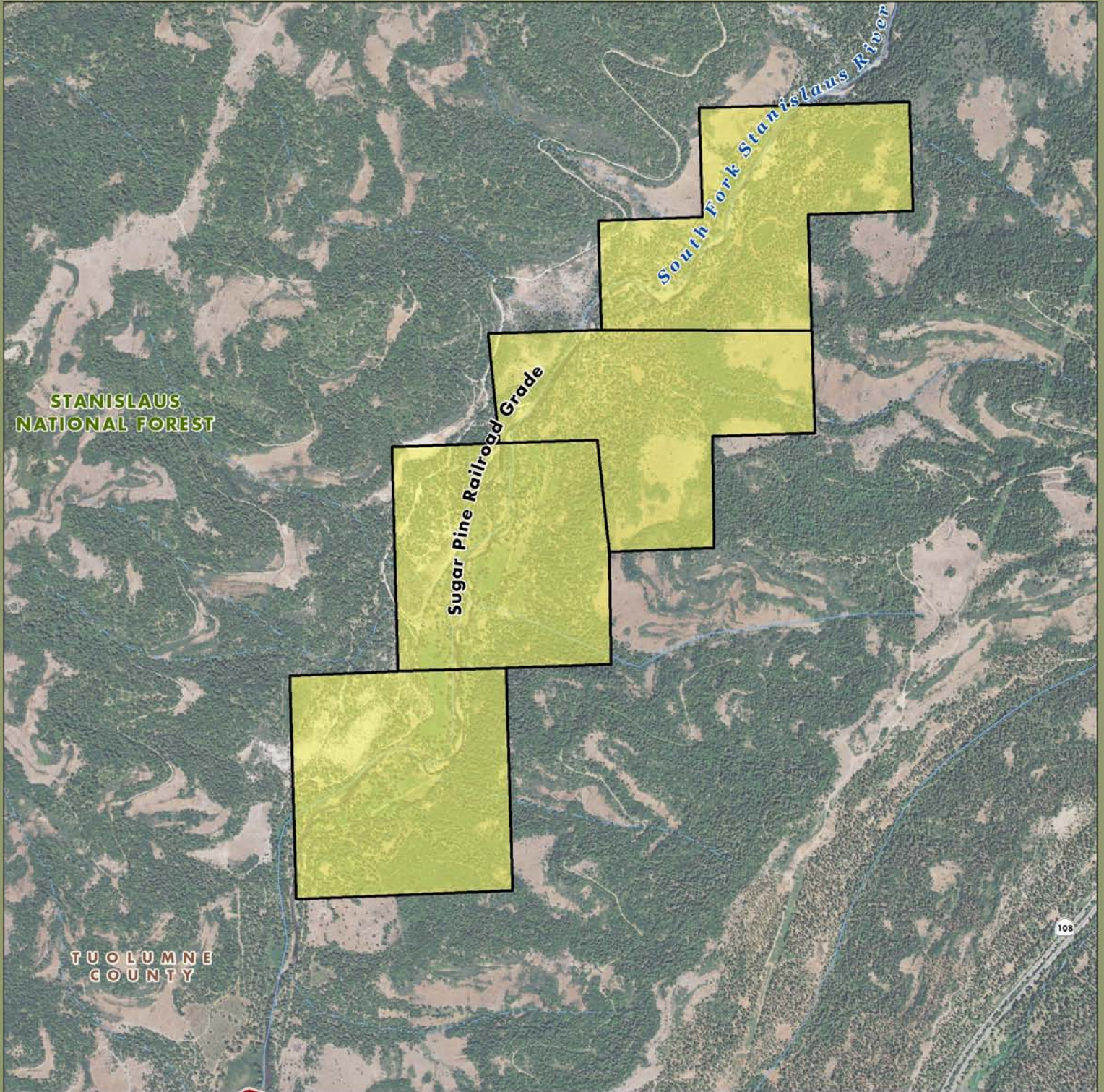






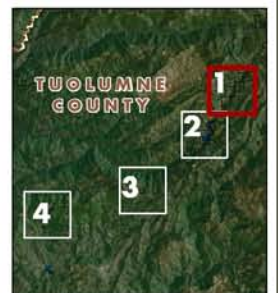
Lyons Reservoir Planning Unit: Map 1



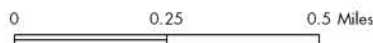
-  PG&E Lands Preliminarily Designated for Donation
-  PG&E Lands Preliminarily Designated for Retention

-  Certain Considerations May Make Donation Inadvisable
-  FERC Boundary

Imagery: NIAP 2009

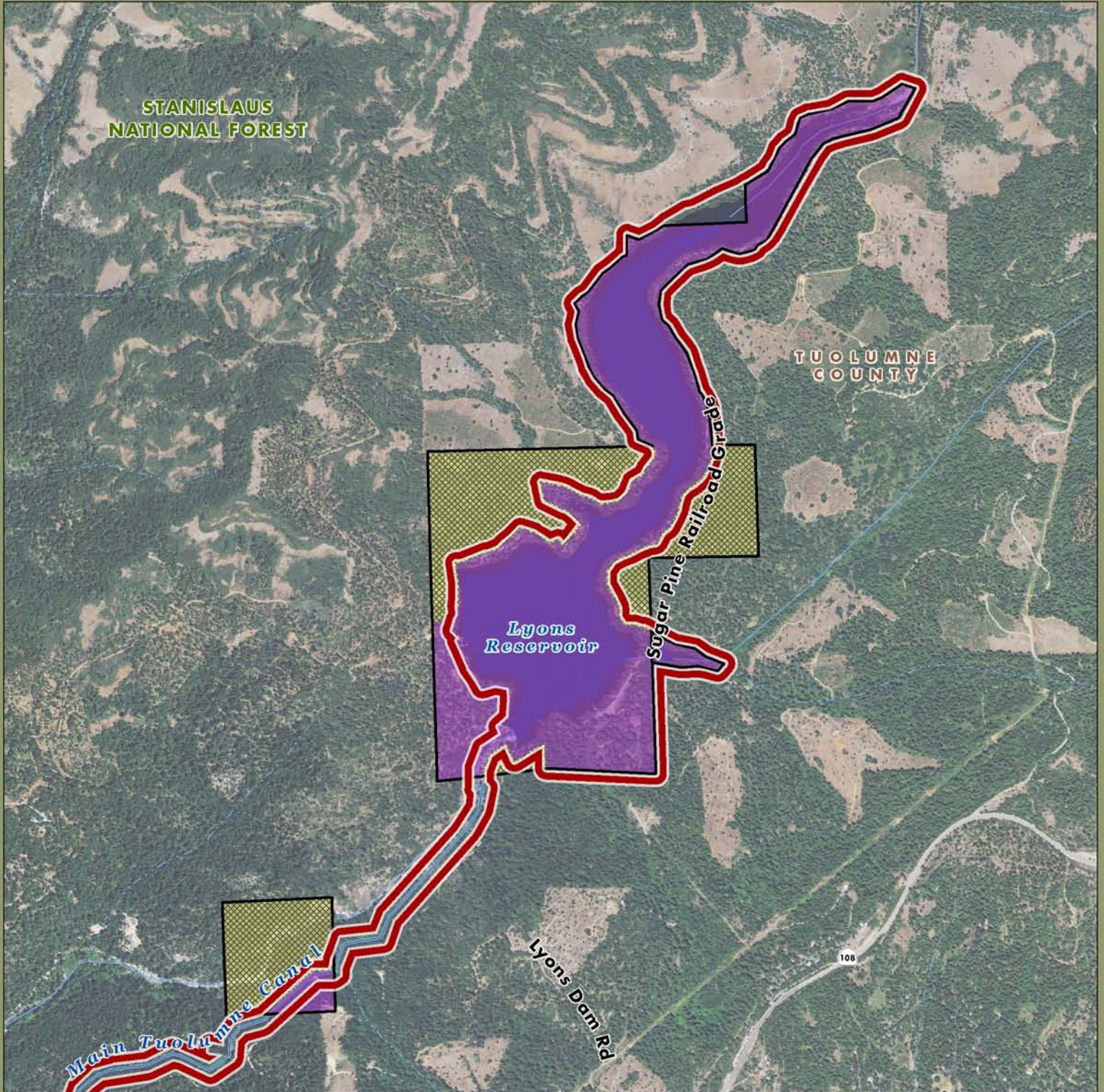



Acreage and location of lands preliminarily designated for retention by PG&E outside the FERC boundary are approximate. FERC boundary is approximate and may change over time.





October 2010
AECOM

Lyons Reservoir Planning Unit: Map 2



-  PG&E Lands Preliminarily Designated for Donation
-  PG&E Lands Preliminarily Designated for Retention

-  Certain Considerations May Make Donation Inadvisable
-  FERC Boundary

Imagery: NIAP 2009



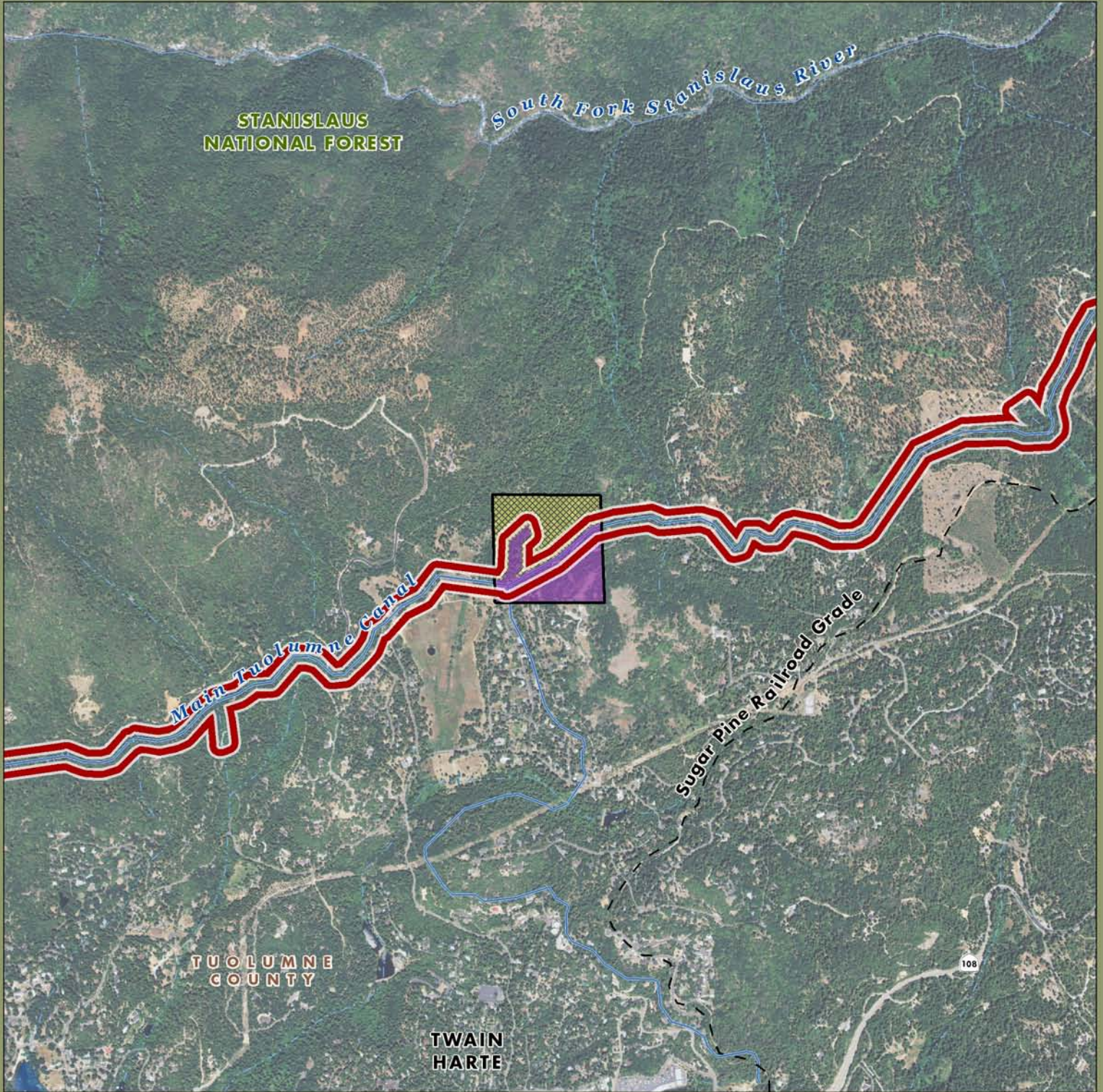
Acreage and location of lands preliminarily designated for retention by PG&E outside the FERC boundary are approximate. FERC boundary is approximate and may change over time.






0 0.25 0.5 Miles

October 2010
AECOM

Lyons Reservoir Planning Unit: Map 3



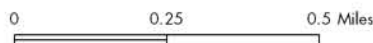
-  PG&E Lands Preliminarily Designated for Donation
-  PG&E Lands Preliminarily Designated for Retention

-  Certain Considerations May Make Donation Inadvisable
-  FERC Boundary

Imagery: NIAP 2009

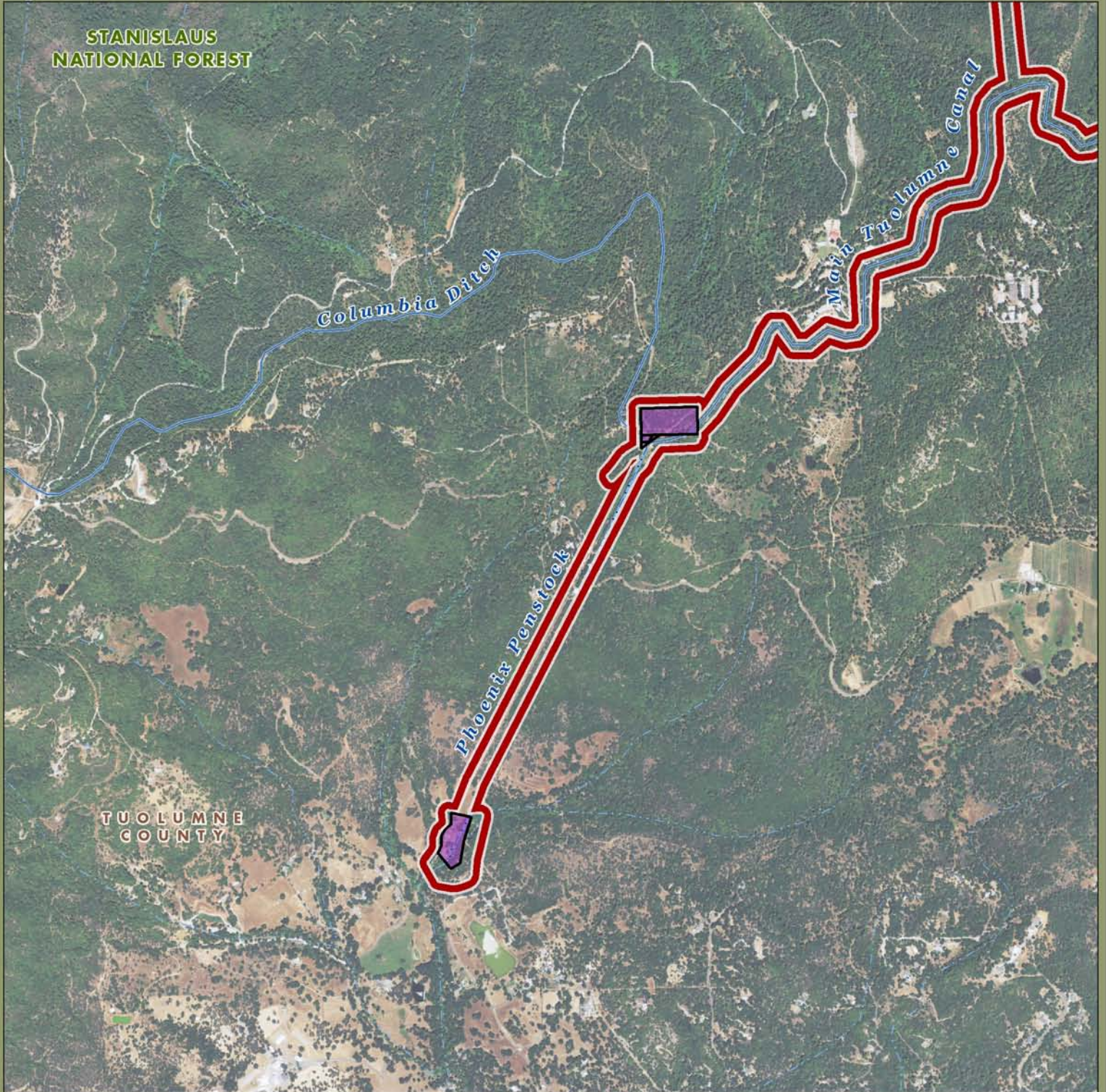




Acreage and location of lands preliminarily designated for retention by PG&E outside the FERC boundary are approximate. FERC boundary is approximate and may change over time.





October 2010
AECOM

Lyons Reservoir Planning Unit: Map4



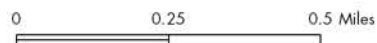
-  PG&E Lands Preliminarily Designated for Donation
-  PG&E Lands Preliminarily Designated for Retention

-  Certain Considerations May Make Donation Inadvisable
-  FERC Boundary

Imagery: NIAP 2009



Acreage and location of lands preliminarily designated for retention by PG&E outside the FERC boundary are approximate. FERC boundary is approximate and may change over time.



October 2010
AECOM