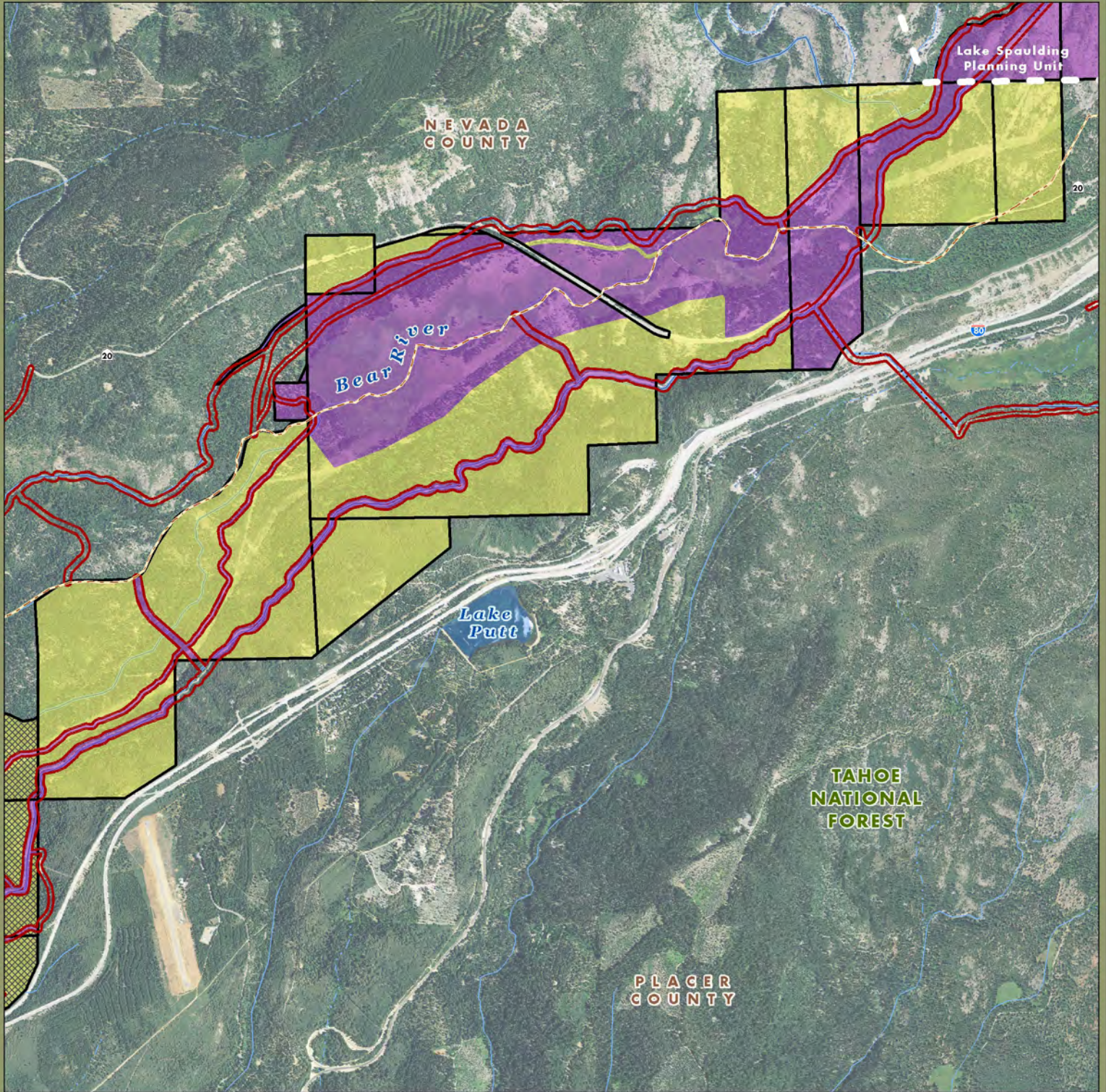


Bear River Planning Unit: Map 1

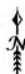


PG&E Lands Preliminarily Designated for Donation
 FERC Boundary
 Imagery: NAIP 2009

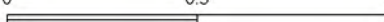
PG&E Lands Preliminarily Designated for Retention

Certain Conditions May Make Donation Inadvisable


Acreage and location of lands preliminarily designated for retention by PG&E outside the FERC boundary are approximate. FERC boundary is approximate and may change over time.

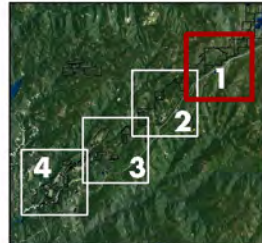


0 0.5 1 Miles

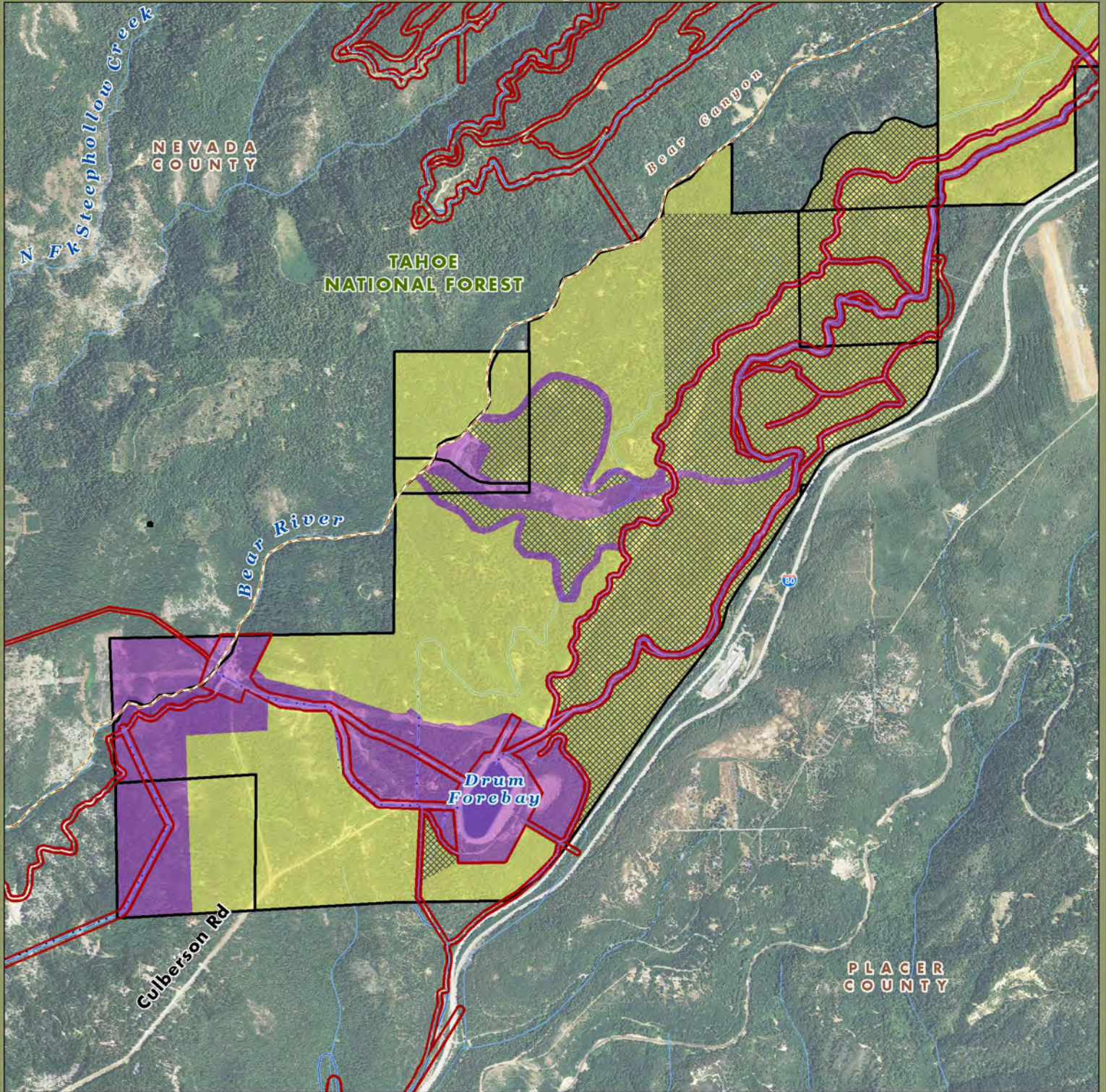


April 2011





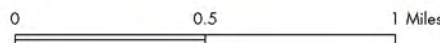
Bear River Planning Unit: Map 2



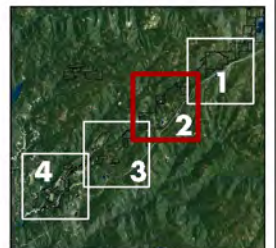
- PG&E Lands Preliminary Designated for Donation
- PG&E Lands Preliminary Designated for Retention
- Certain Conditions May Make Donation Inadvisable
- FERC Boundary

Imagery: NAIP 2009

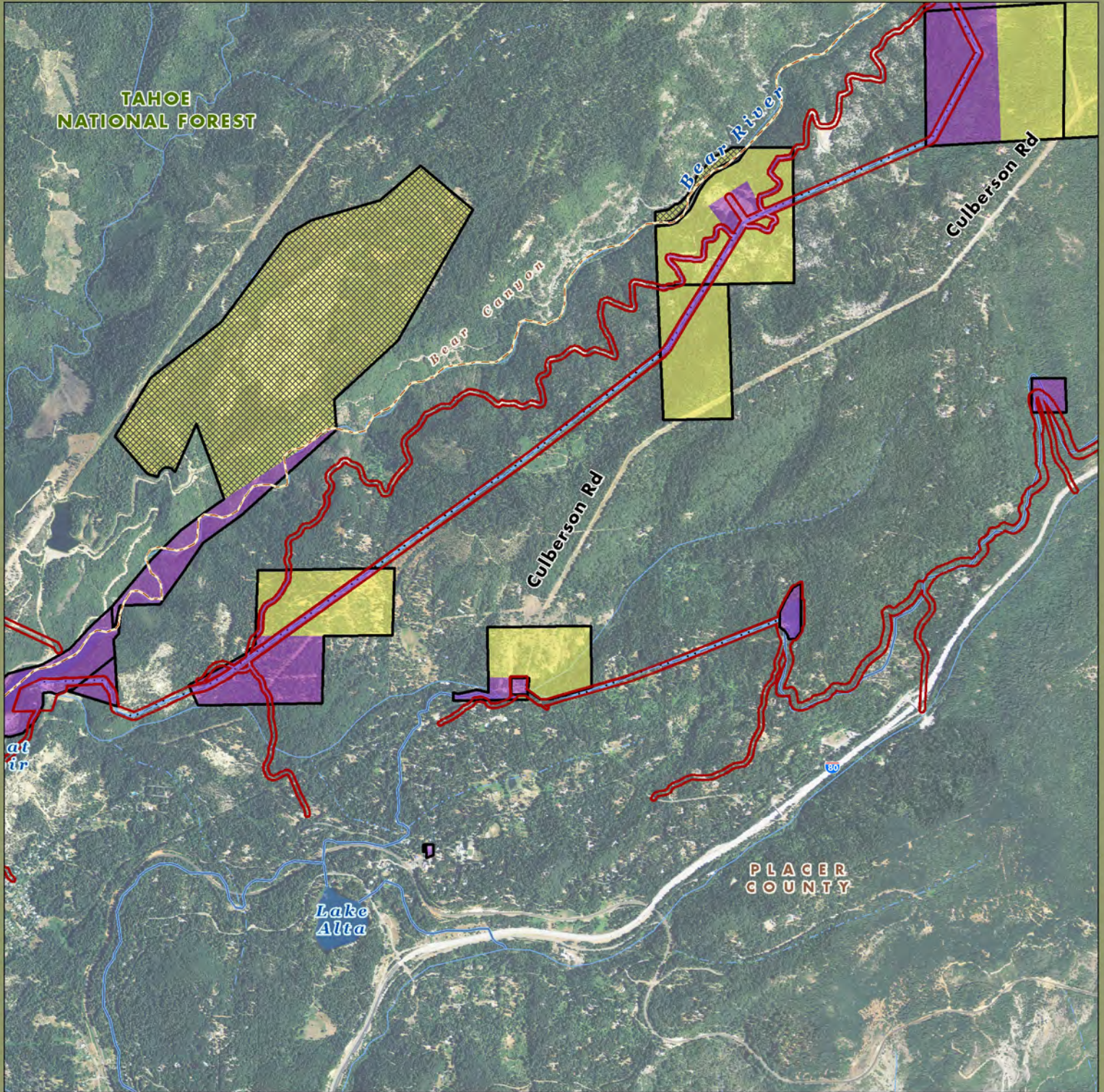
Acreage and location of lands preliminarily designated for retention by PG&E outside the FERC boundary are approximate. FERC boundary is approximate and may change over time.







April 2011
AECOM




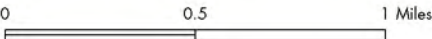
Bear River Planning Unit: Map 3




	PG&E Lands Preliminarily Designated for Donation		FERC Boundary	Imagery: NAIP 2009
	PG&E Lands Preliminarily Designated for Retention			
	Certain Conditions May Make Donation Inadvisable			

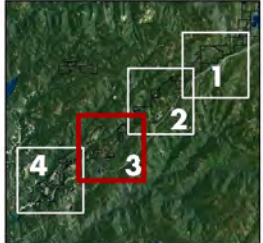
Acreage and location of lands preliminarily designated for retention by PG&E outside the FERC boundary are approximate. FERC boundary is approximate and may change over time.



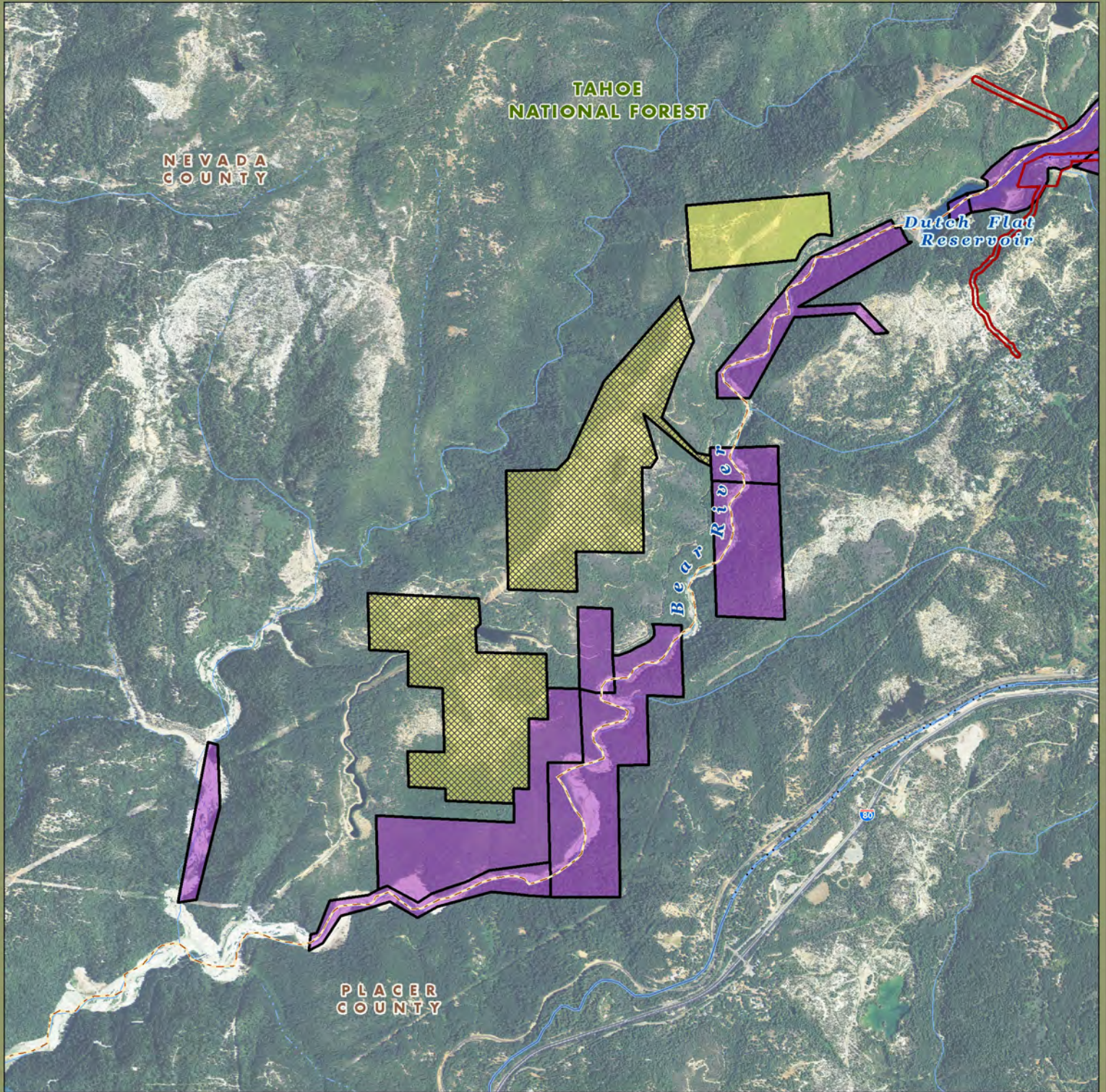


April 2011





Bear River Planning Unit: Map 4

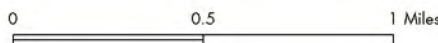


- PG&E Lands Preliminarily Designated for Donation
- PG&E Lands Preliminarily Designated for Retention
- Certain Conditions May Make Donation Inadvisable

FERC Boundary

Imagery: NAIP 2009

Acreage and location of lands preliminarily designated for retention by PG&E outside the FERC boundary are approximate. FERC boundary is approximate and may change over time.



April 2011
AECOM

