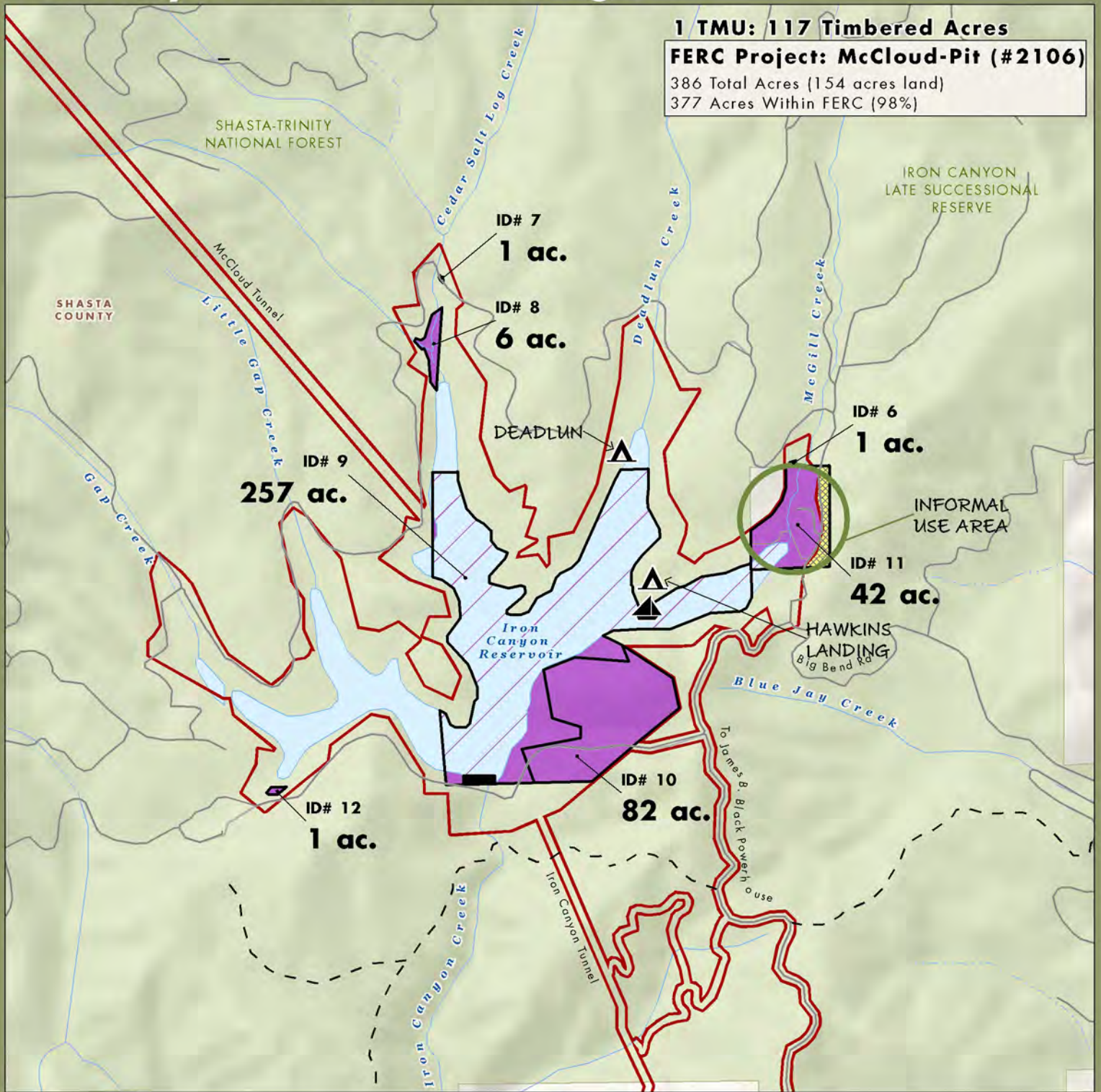


Iron Canyon Reservoir Planning Unit



PG&E Lands Preliminarily Designated for Retention	FERC Boundary	Private	Boat Launch
PG&E Lands Under Water	Trail	USFS	Campground
Constrained Land - Previously Identified as Available for Donation. Recommended for Retention by PG&E.			Dam

Acreage and location of lands preliminarily designated for retention by PG&E outside the FERC boundary are approximate. FERC boundary is approximate and may change over time.

