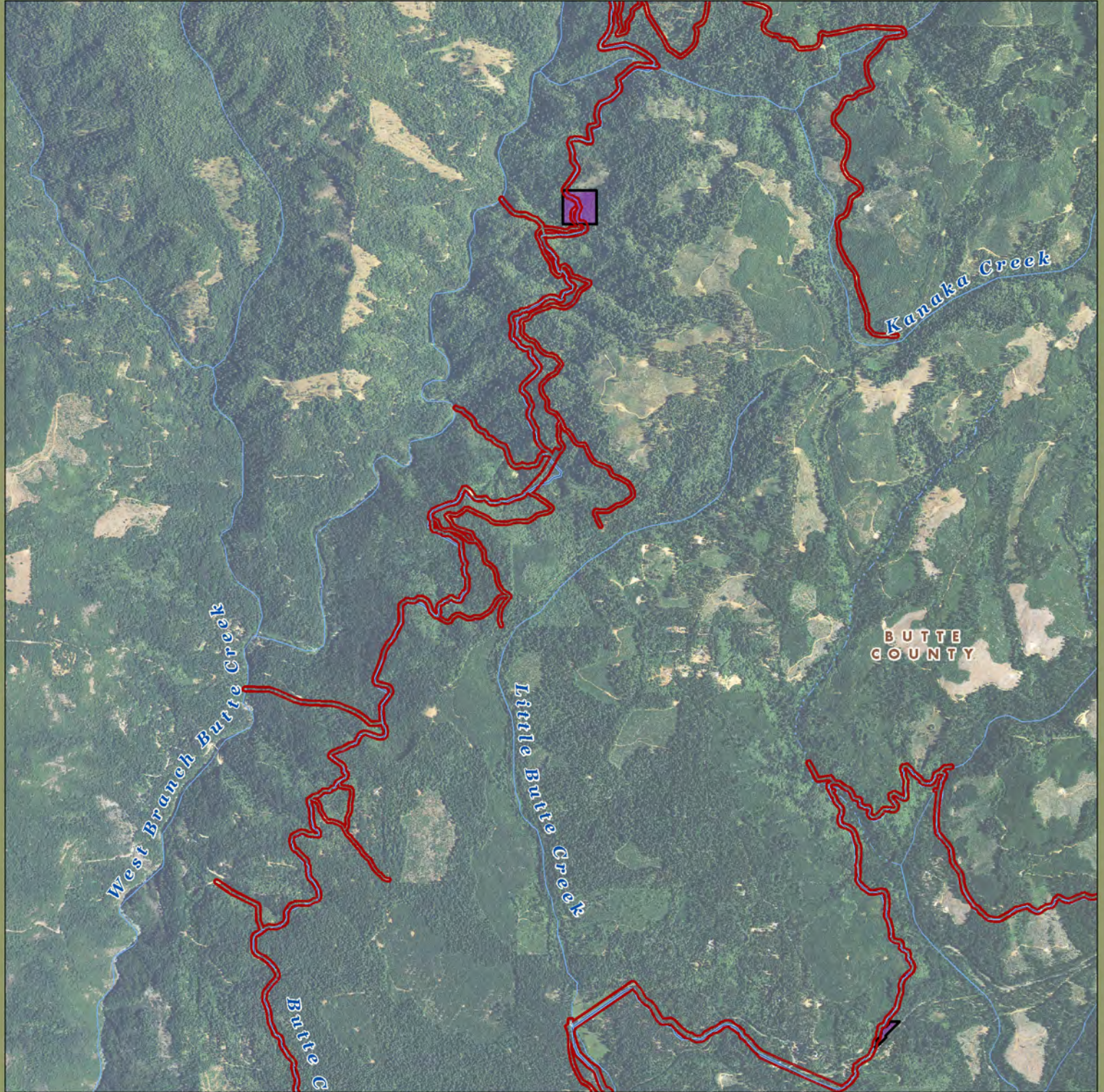




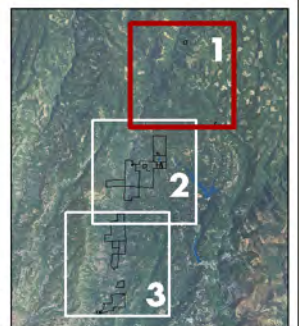


Butte Creek Planning Unit: Map 1

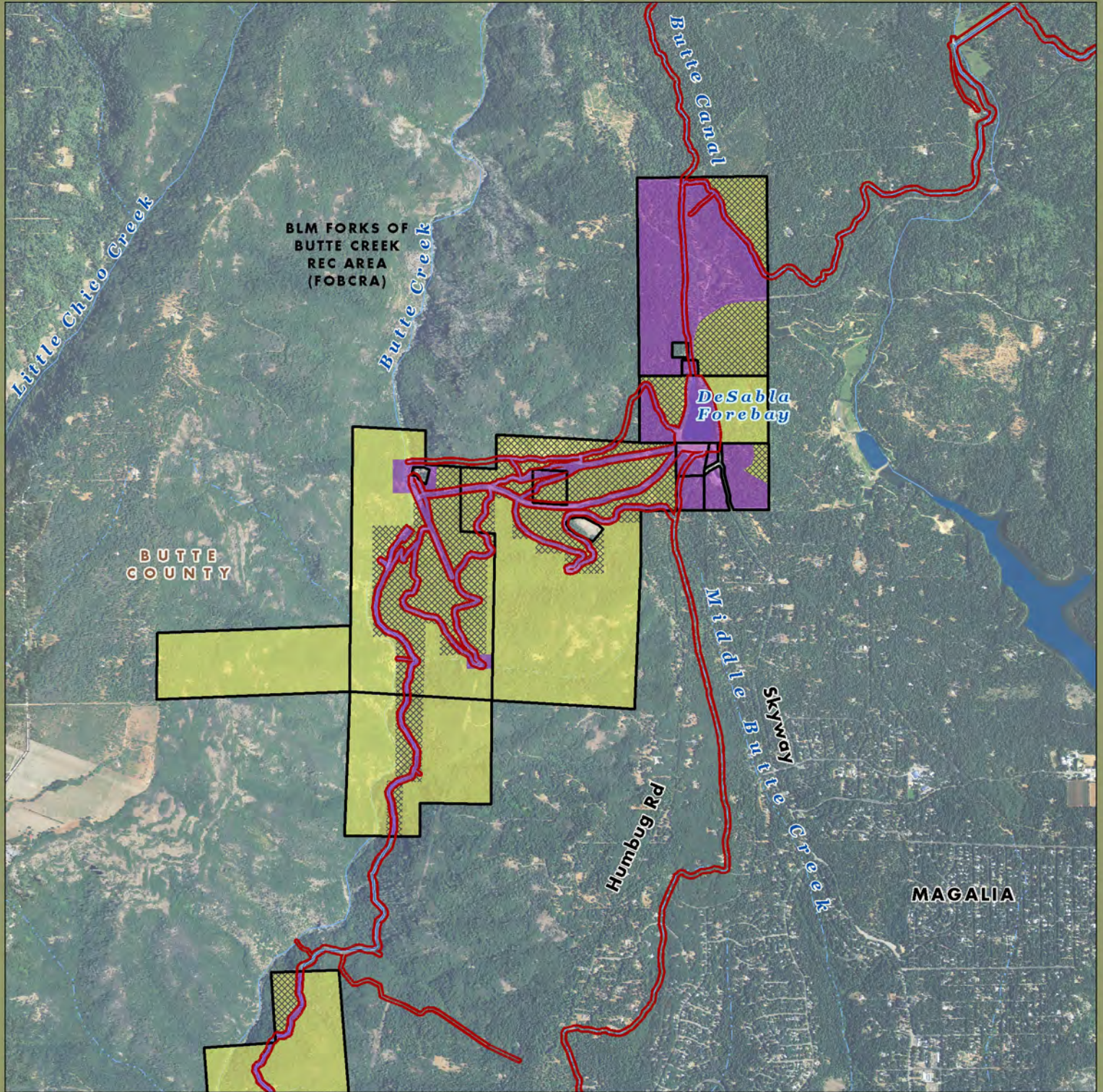






-  PG&E Lands Preliminarily Designated for Donation
-  PG&E Lands Preliminarily Designated for Retention
-  Certain Considerations May Make Donation Inadvisable
-  FERC Boundary

Acres and location of lands preliminarily designated for retention by PG&E outside the FERC boundary are approximate. FERC boundary is approximate and may change over time.

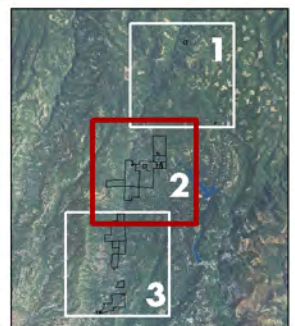


Butte Creek Planning Unit: Map 2

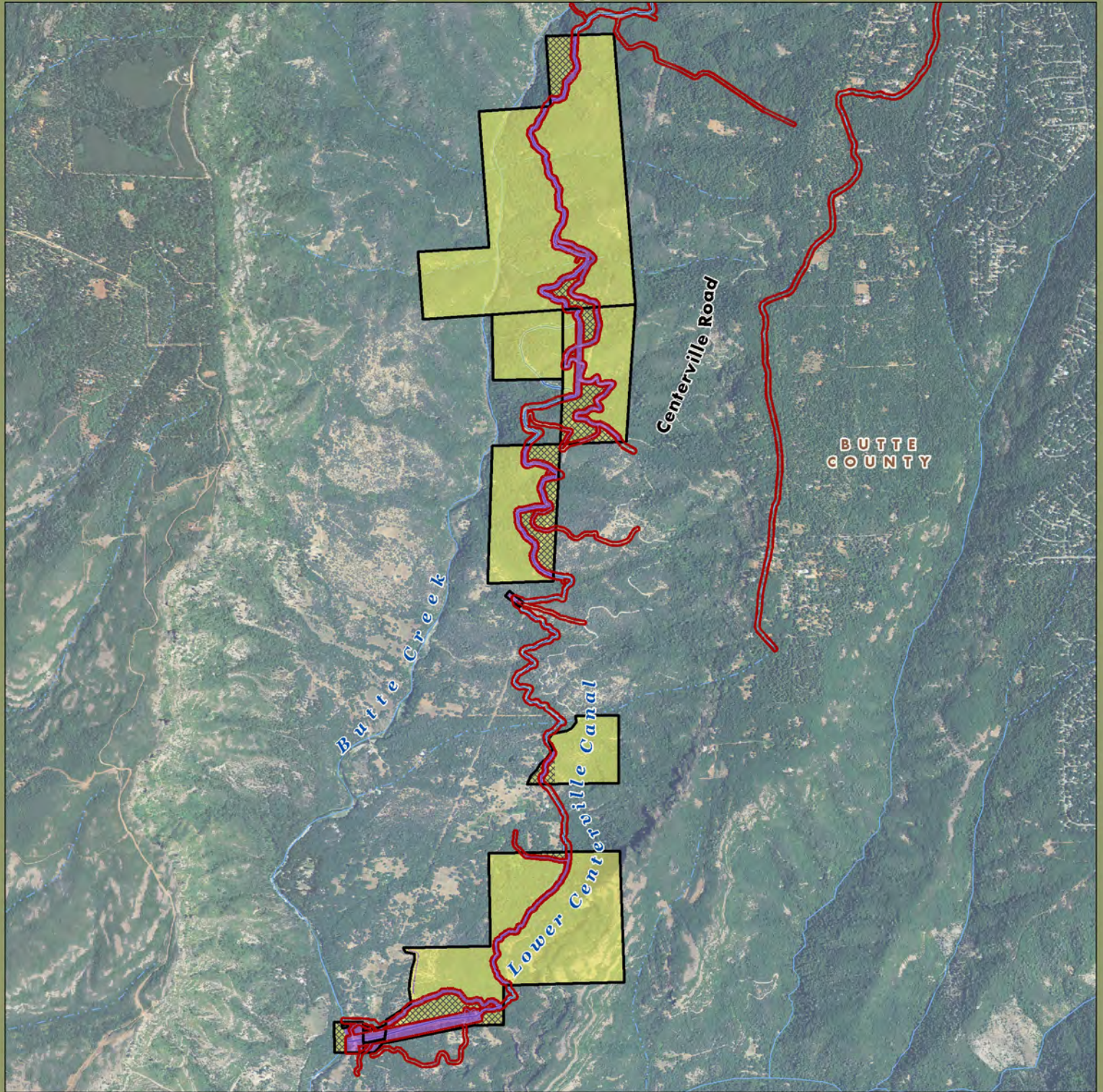






-  PG&E Lands Preliminarily Designated for Donation
-  PG&E Lands Preliminarily Designated for Retention
-  Certain Considerations May Make Donation Inadvisable
-  FERC Boundary

Acreage and location of lands preliminarily designated for retention by PG&E outside the FERC boundary are approximate. FERC boundary is approximate and may change over time.



Butte Creek Planning Unit: Map 3



-  PG&E Lands Preliminarily Designated for Donation
-  PG&E Lands Preliminarily Designated for Retention
-  Certain Considerations May Make Donation Inadvisable
-  FERC Boundary

Acreeage and location of lands preliminarily designated for retention by PG&E outside the FERC boundary are approximate. FERC boundary is approximate and may change over time.

