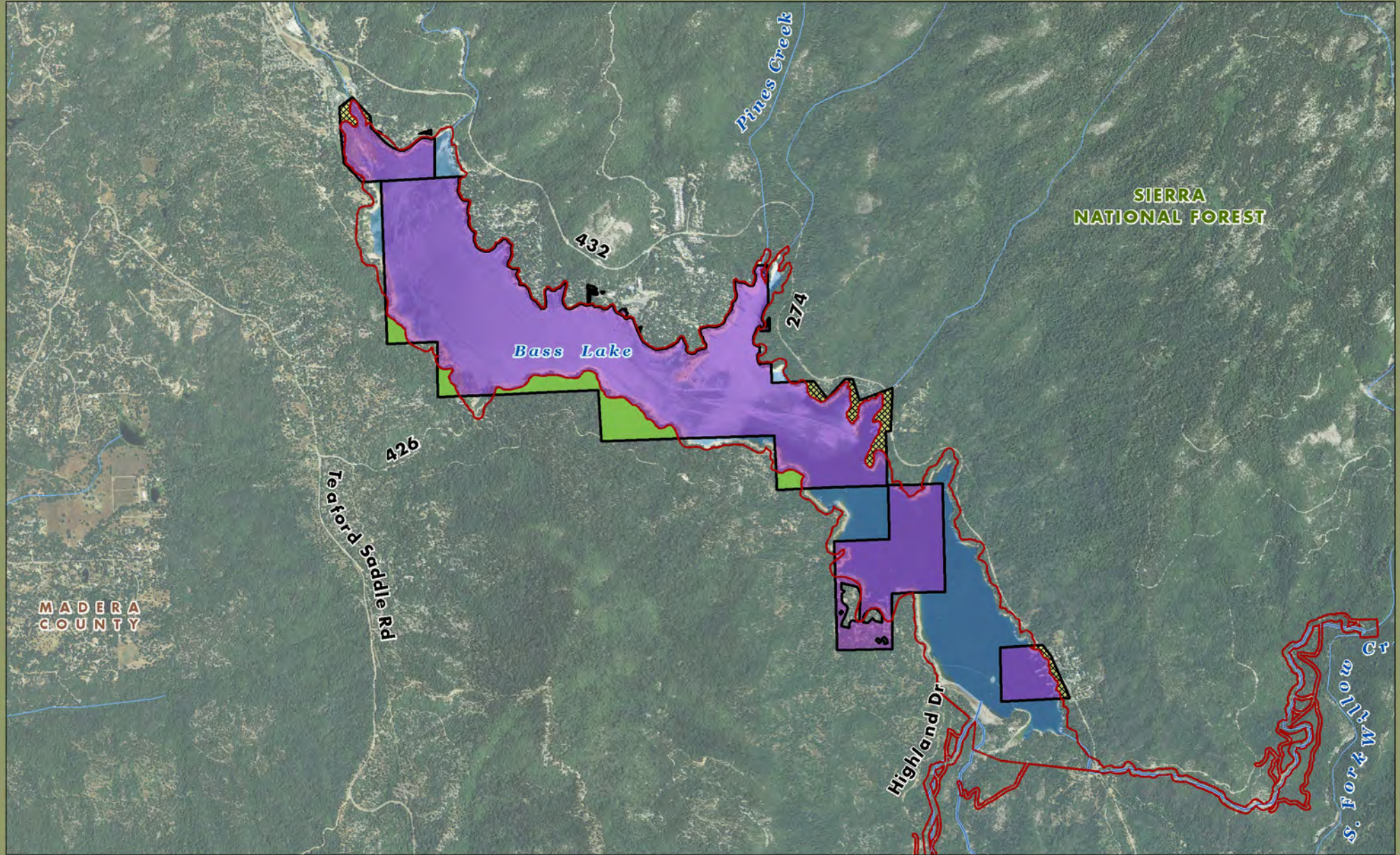




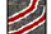
# Bass Lake Planning Unit




 Constrained Land - Previously Identified as Available for Donation. **Recommended for Retention by PG&E.**

 Land Previously Identified as Available for Donation. **Recommended for Donation to the USFS.**

 PG&E Lands Preliminarily Designated for Retention

 FERC Boundary

0 0.5 1 Mile



Acreage and location of lands preliminarily designated for retention by PG&E outside the FERC boundary are approximate. FERC boundary is approximate and may change over time.

April 2011

Imagery: NAIP 2009



AECOM