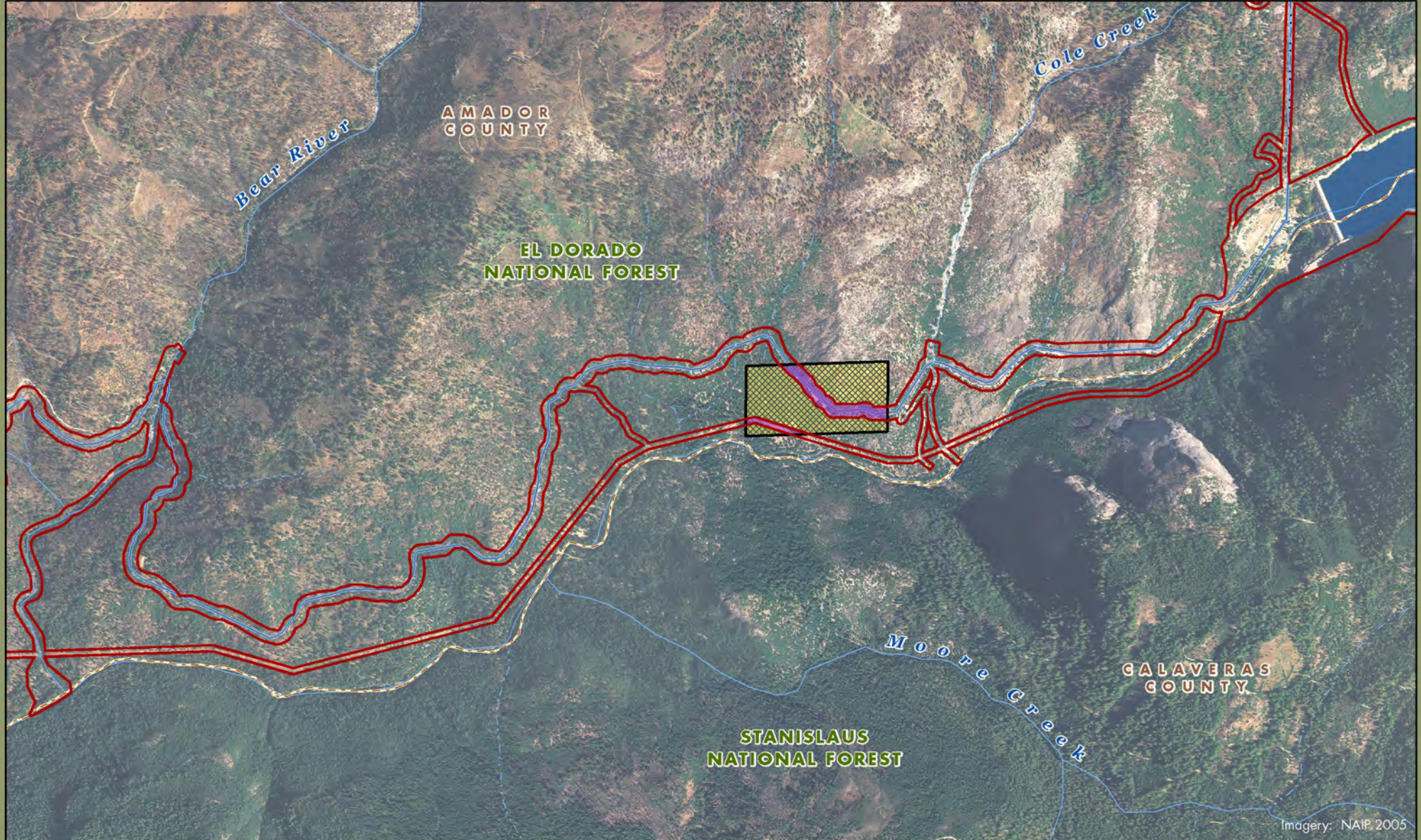




# North Fork Mokelumne River: Map 1



 PG&E Lands Preliminarily Designated for Donation

 FERC Boundary

 PG&E Lands Preliminarily Designated for Retention

 Certain Conditions May Make Donation Inadvisable



0 0.25 0.5 0.75 Miles

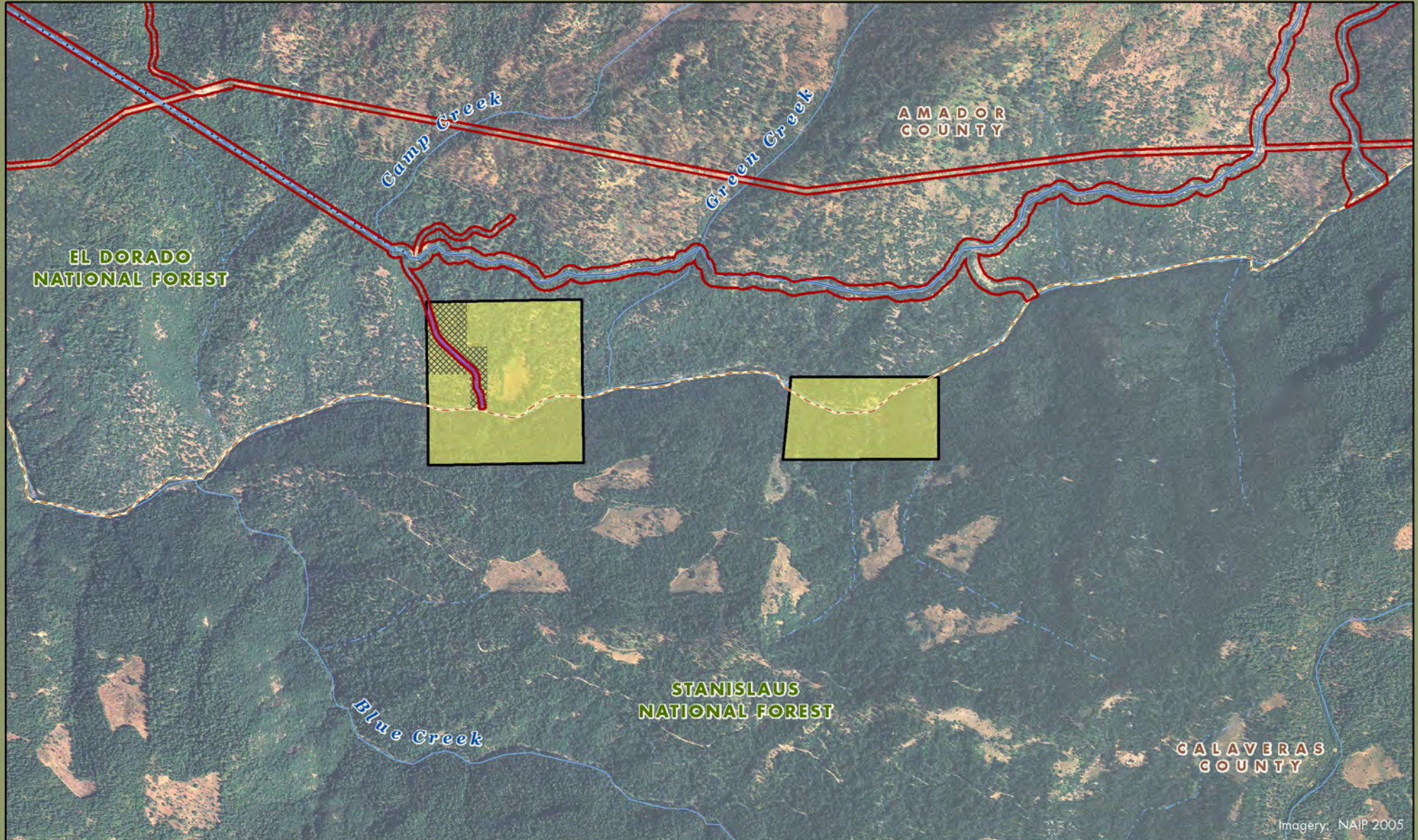
Acreage and location of lands preliminarily designated for retention by PG&E outside the FERC boundary are approximate. FERC boundary is approximate and may change over time.




February 2011  
**AECOM**





# North Fork Mokelumne River: Map 2



-  PG&E Lands Preliminarily Designated for Donation
-  PG&E Lands Preliminarily Designated for Retention
-  Certain Conditions May Make Donation Inadvisable

 FERC Boundary



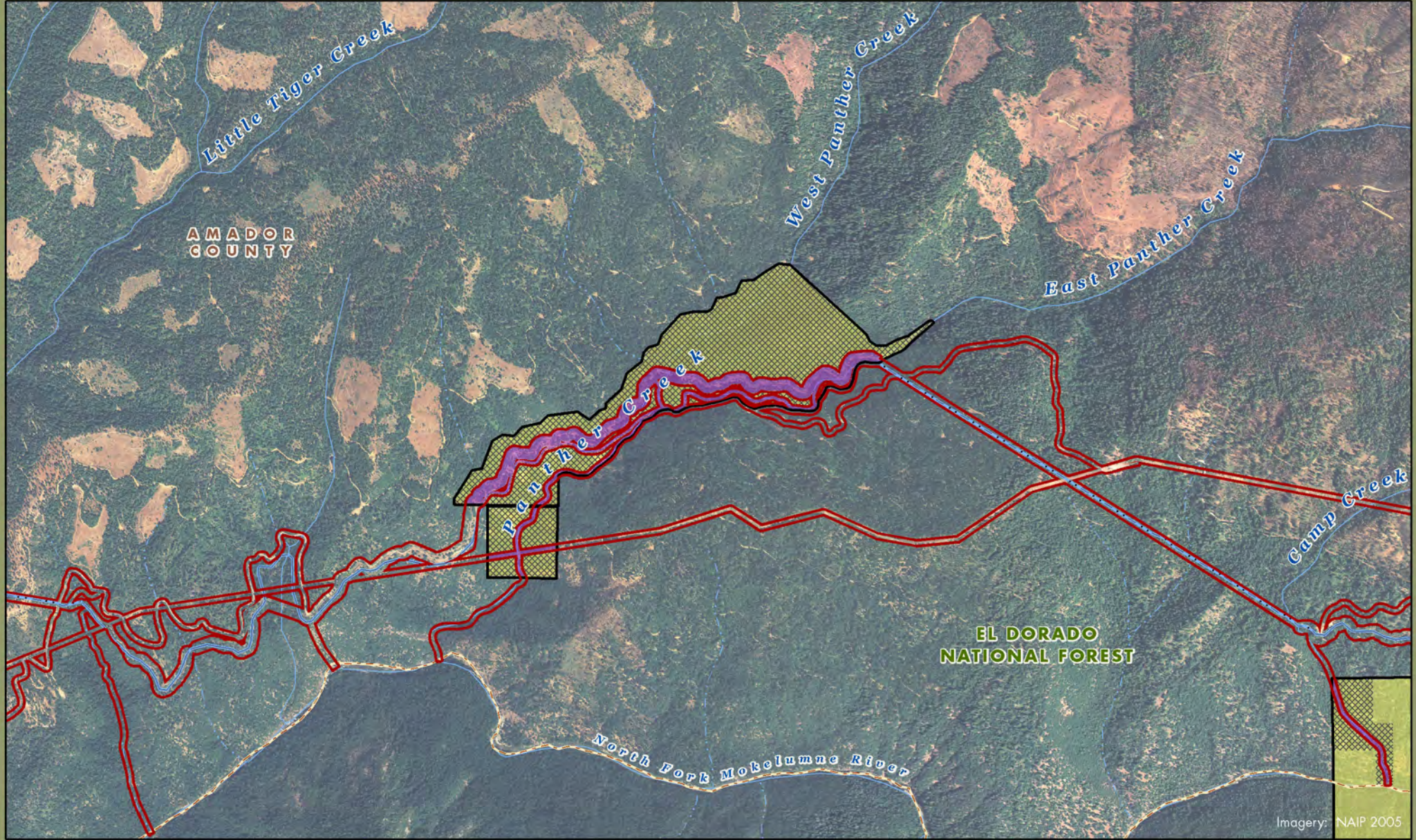
0 0.25 0.5 0.75 Miles




Acreage and location of lands preliminarily designated for retention by PG&E outside the FERC boundary are approximate. FERC boundary is approximate and may change over time.





# North Fork Mokelumne River: Map 3



-  PG&E Lands Preliminarily Designated for Donation
-  PG&E Lands Preliminarily Designated for Retention
-  Certain Conditions May Make Donation Inadvisable

 FERC Boundary



0 0.25 0.5 0.75 Miles

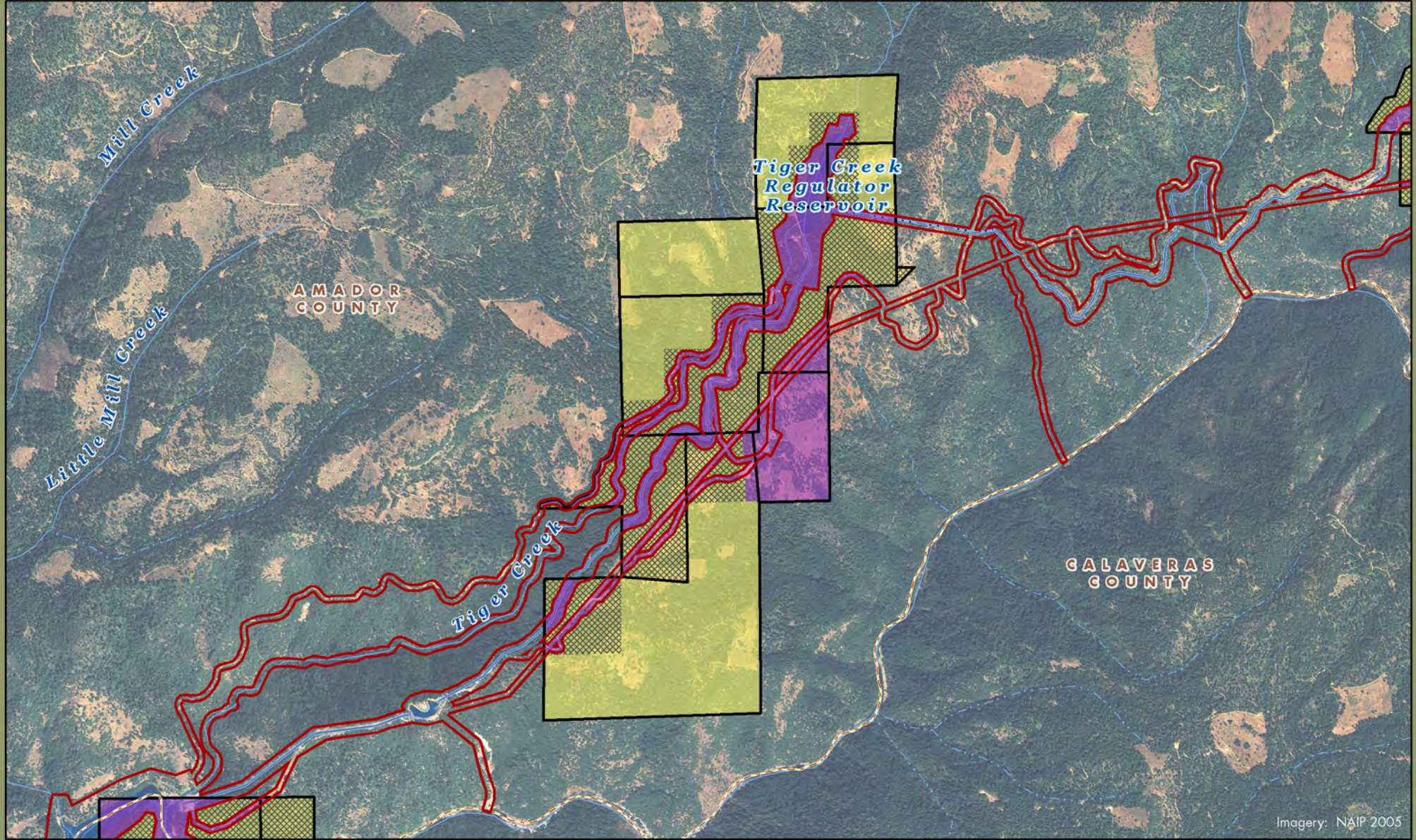
Acreage and location of lands preliminarily designated for retention by PG&E outside the FERC boundary are approximate. FERC boundary is approximate and may change over time.

February 2011  
**AECOM**





# Upper Mokelumne River Watershed North Fork Mokelumne River: Map 4



Imagery: NAIP 2005

- PG&E Lands Preliminarily Designated for Donation
- PG&E Lands Preliminarily Designated for Retention
- Certain Conditions May Make Donation Inadvisable

FERC Boundary



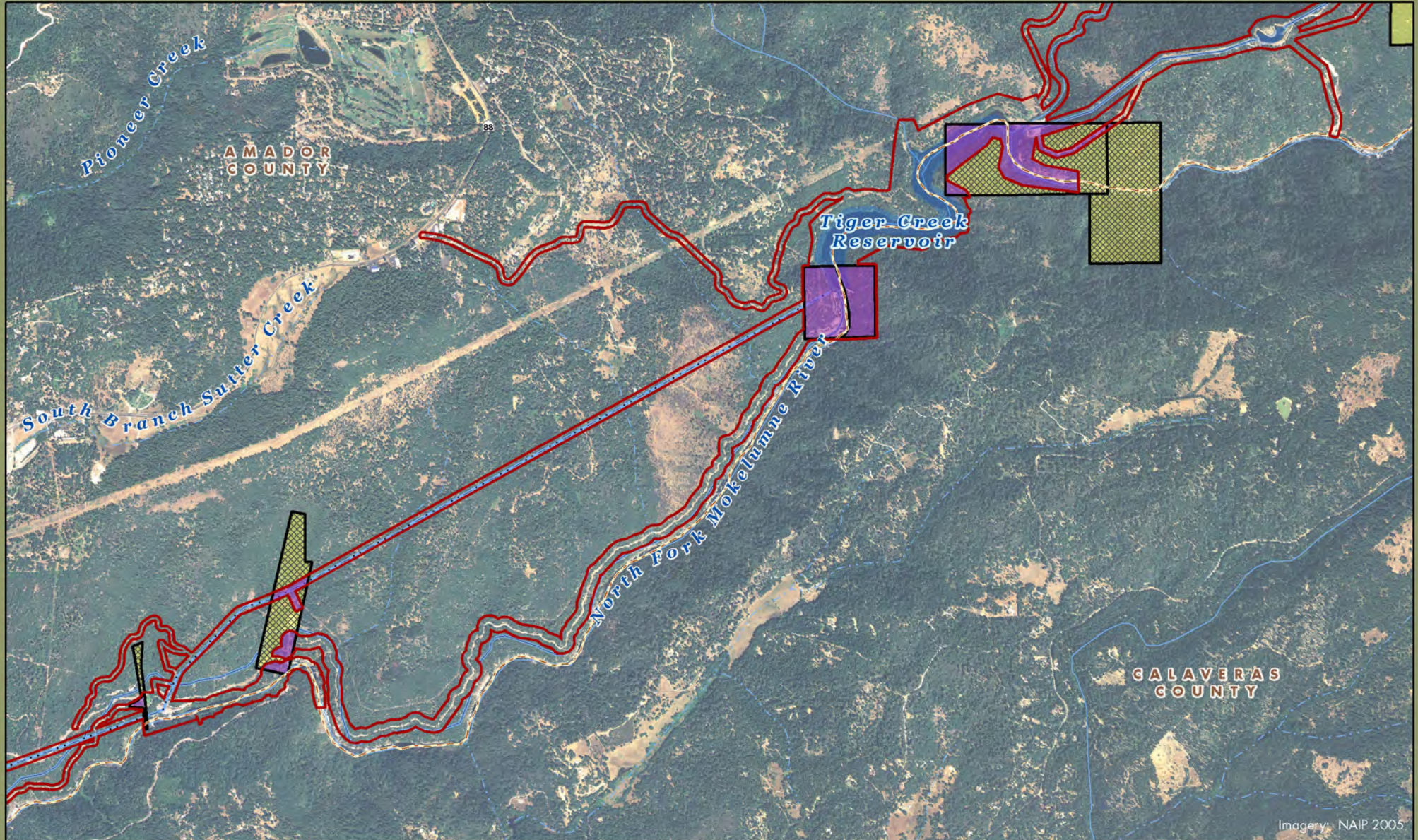
0 0.25 0.5 0.75 Miles




Acreage and location of lands preliminarily designated for retention by PG&E outside the FERC boundary are approximate. FERC boundary is approximate and may change over time.






# North Fork Mokelumne River: Map 5




-  PG&E Lands Preliminarily Designated for Donation
-  PG&E Lands Preliminarily Designated for Retention
-  Certain Conditions May Make Donation Inadvisable

 FERC Boundary



0 0.25 0.5 0.75 Miles



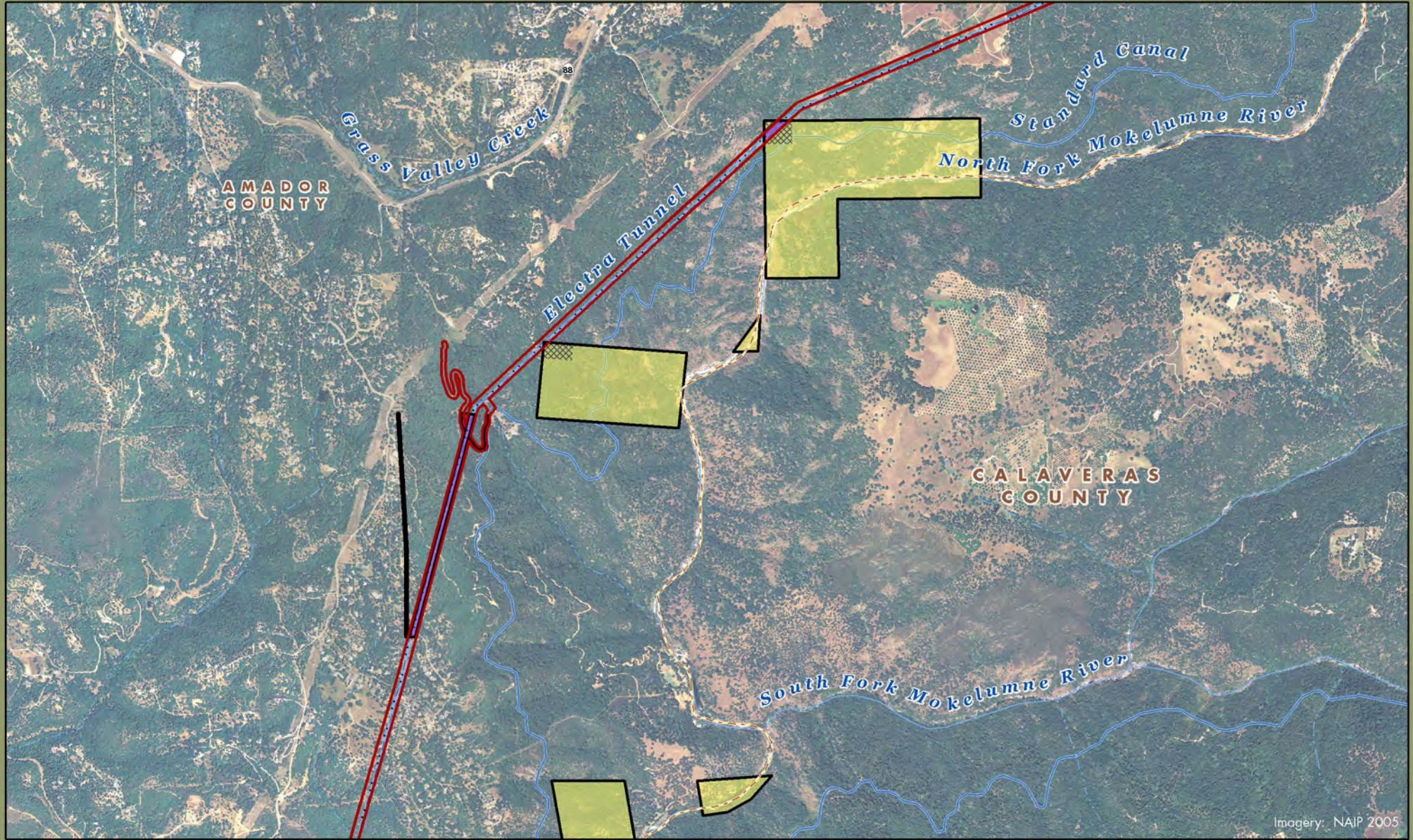
Acreage and location of lands preliminarily designated for retention by PG&E outside the FERC boundary are approximate. FERC boundary is approximate and may change over time.




February 2011  
**AECOM**





# North Fork Mokelumne River: Map 6



-  PG&E Lands Preliminarily Designated for Donation
-  PG&E Lands Preliminarily Designated for Retention
-  Certain Conditions May Make Donation Inadvisable

 FERC Boundary



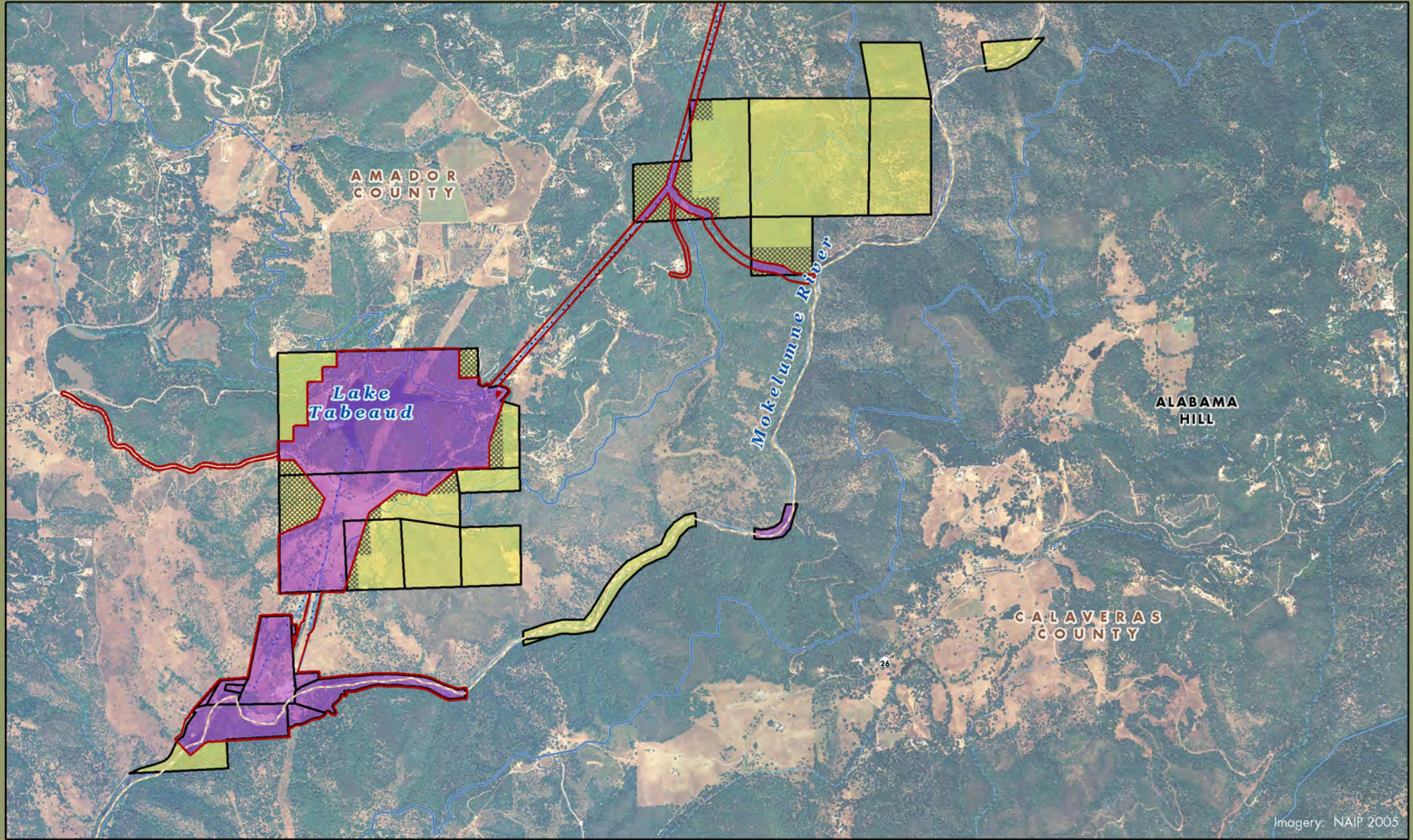
0 0.25 0.5 0.75 Miles

Acreage and location of lands preliminarily designated for retention by PG&E outside the FERC boundary are approximate. FERC boundary is approximate and may change over time.




February 2011  
**AECOM**







Imagery: NAIP 2005

-  PG&E Lands Preliminarily Designated for Donation
-  PG&E Lands Preliminarily Designated for Retention
-  Certain Conditions May Make Donation Inadvisable

 FERC Boundary



0 0.25 0.5 0.75 Miles

Acreage and location of lands preliminarily designated for retention by PG&E outside the FERC boundary are approximate. FERC boundary is approximate and may change over time.

February 2011  
**AECOM**

