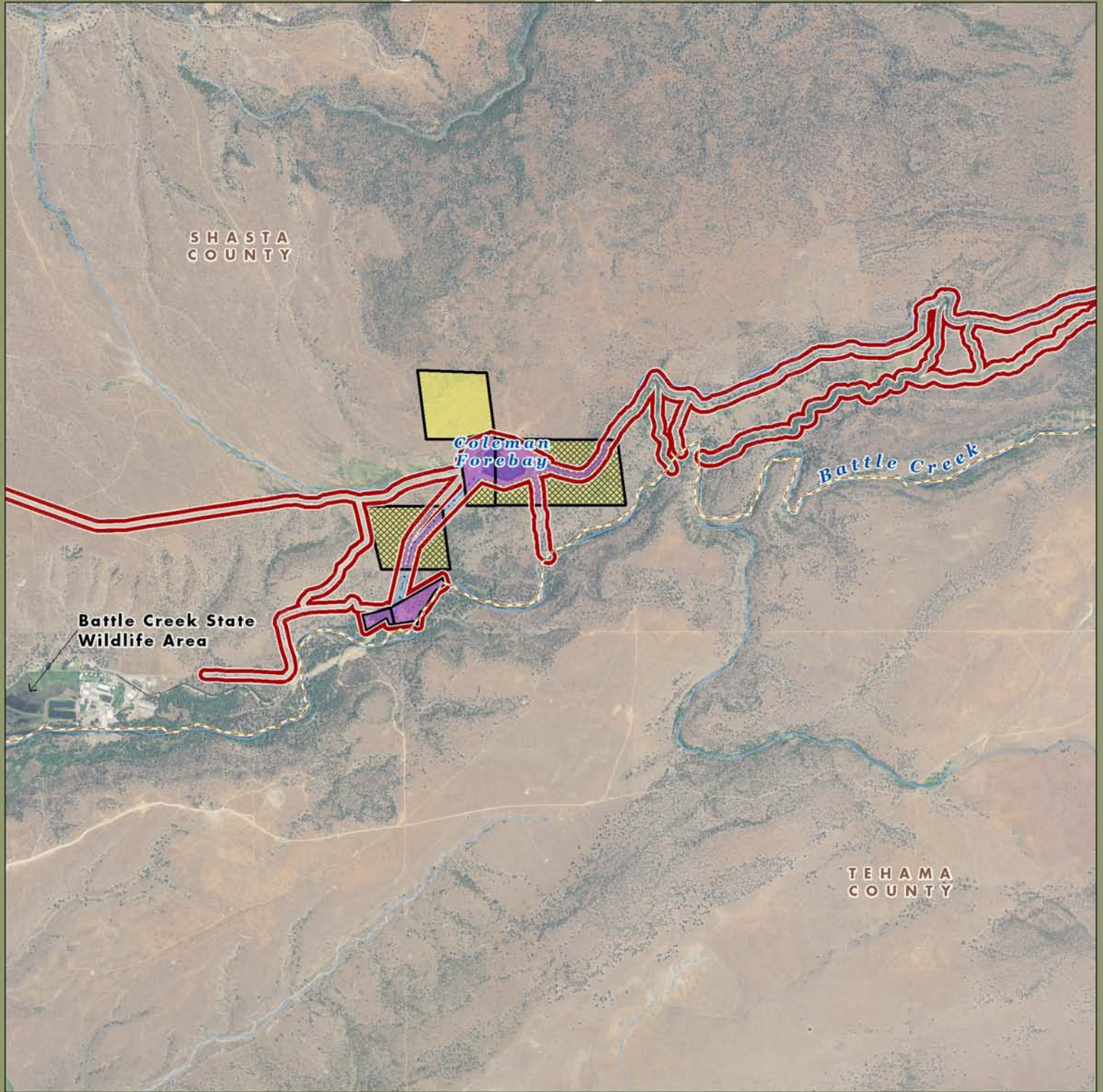



Battle Creek Planning Unit: Map 1



 PG&E Lands Preliminarily Designated for Donation

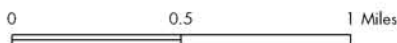
 Certain Considerations May Make Donation Inadvisable

 PG&E Lands Preliminarily Designated for Retention

 FERC Boundary

Imagery: NIAP 2009

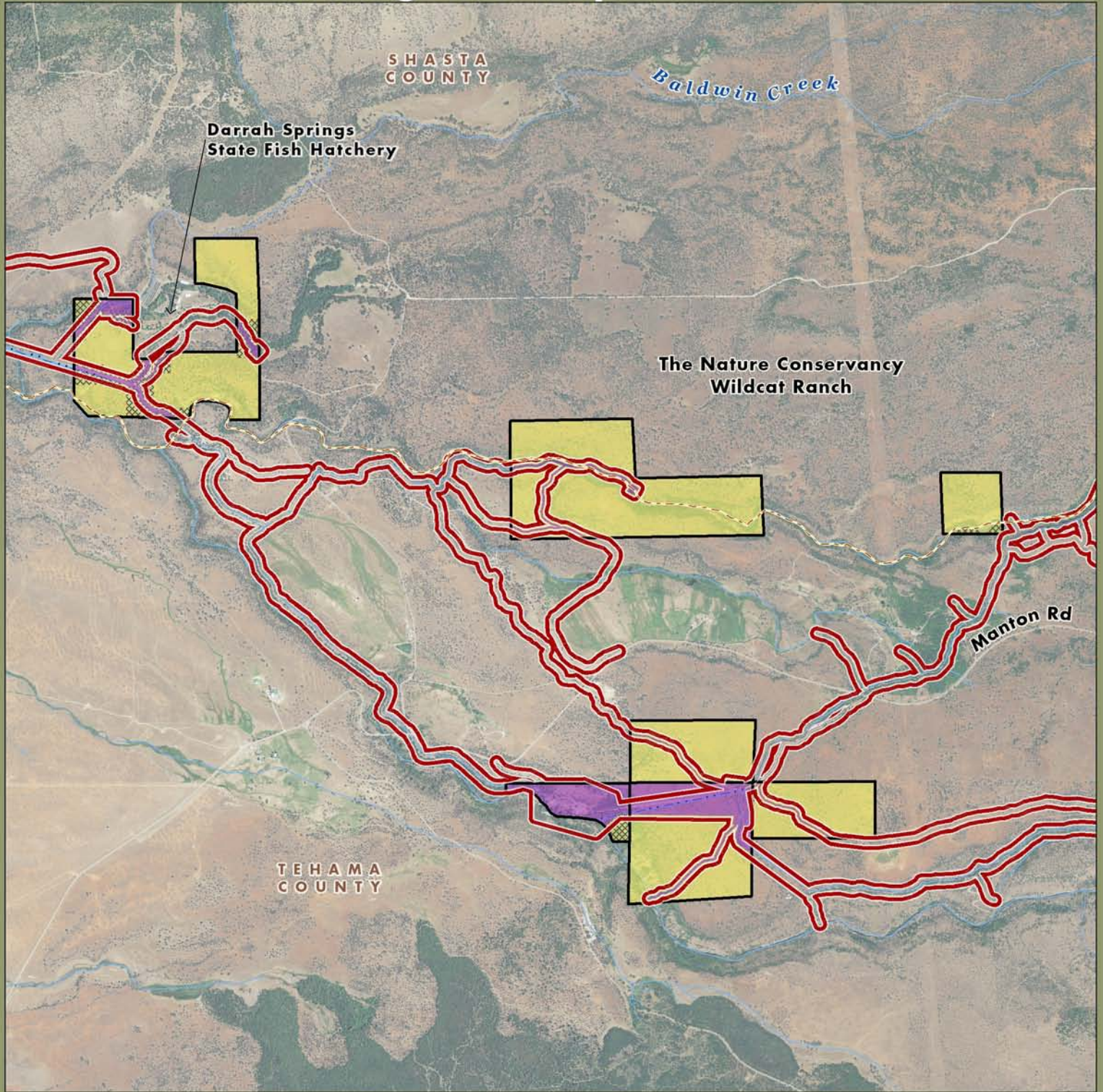
Acreage and location of lands preliminarily designated for retention by PG&E outside the FERC boundary are approximate. FERC boundary is approximate and may change over time.





October 2010
AECOM



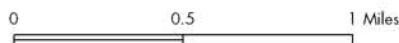
Battle Creek Planning Unit: Map 2



-  PG&E Lands Preliminarily Designated for Donation
-  Certain Considerations May Make Donation Inadvisable
-  PG&E Lands Preliminarily Designated for Retention
-  FERC Boundary

Imagery: NIAP 2009

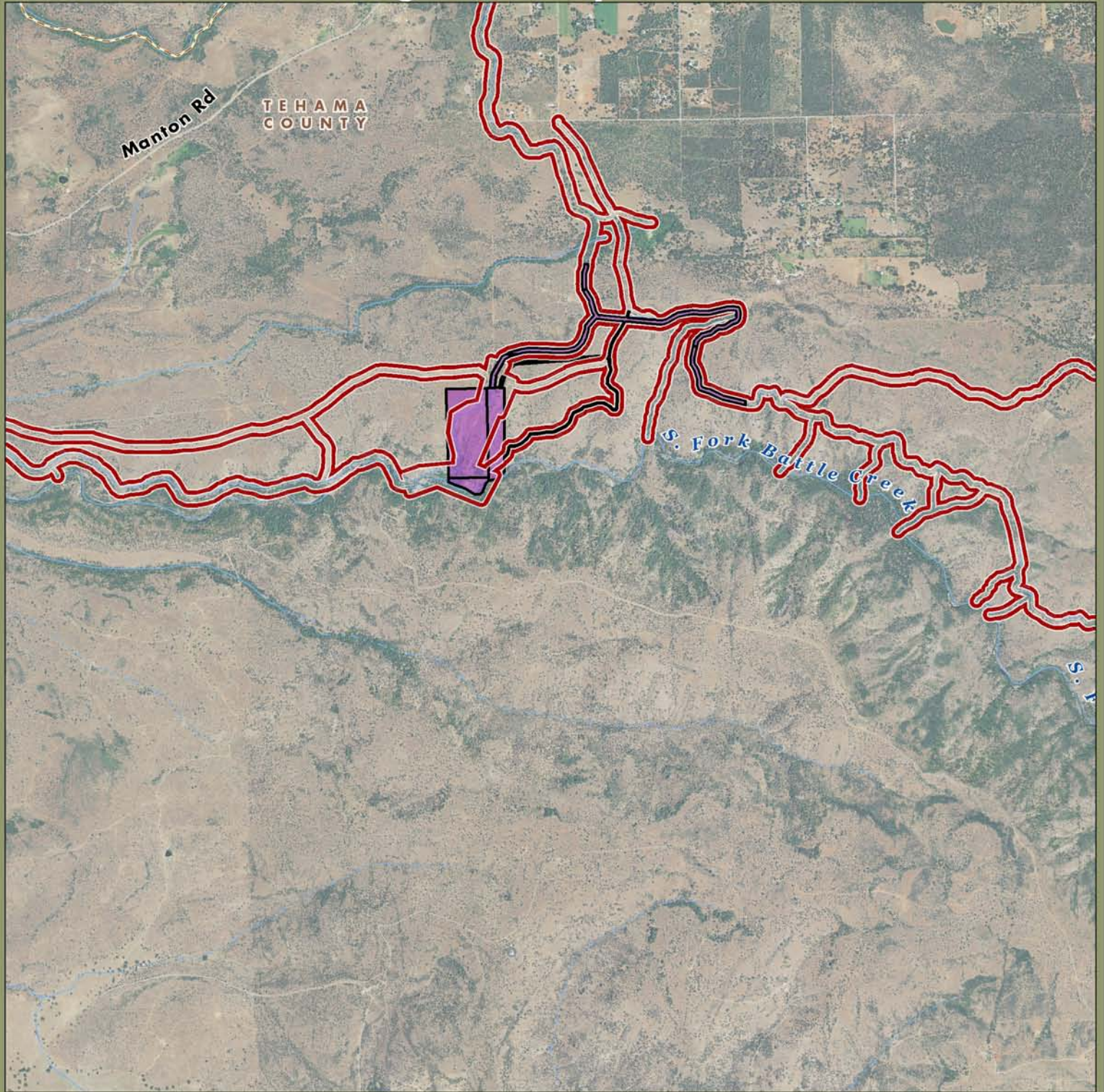
Acreage and location of lands preliminarily designated for retention by PG&E outside the FERC boundary are approximate. FERC boundary is approximate and may change over time.



October 2010
AECOM



Battle Creek Planning Unit: Map 3



 PG&E Lands Preliminarily Designated for Donation

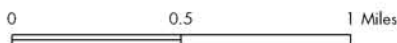
 Certain Considerations May Make Donation Inadvisable

 PG&E Lands Preliminarily Designated for Retention

 FERC Boundary

Imagery: NIAP 2009

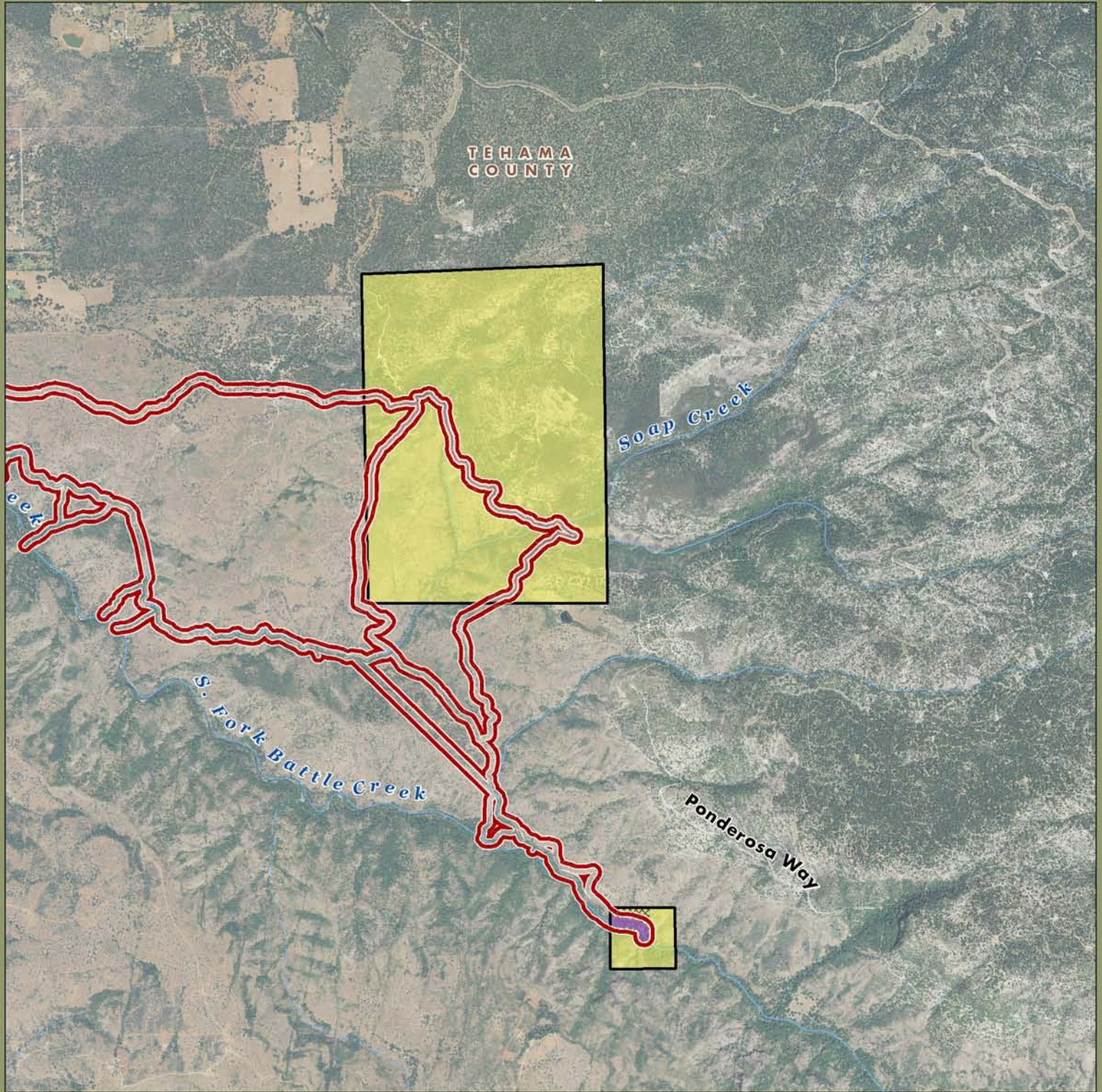
Acreage and location of lands preliminarily designated for retention by PG&E outside the FERC boundary are approximate. FERC boundary is approximate and may change over time.




October 2010
AECOM



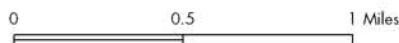
Battle Creek Planning Unit: Map 4



-  PG&E Lands Preliminarily Designated for Donation
-  Certain Considerations May Make Donation Inadvisable
-  PG&E Lands Preliminarily Designated for Retention
-  FERC Boundary

Imagery: NIAP 2009

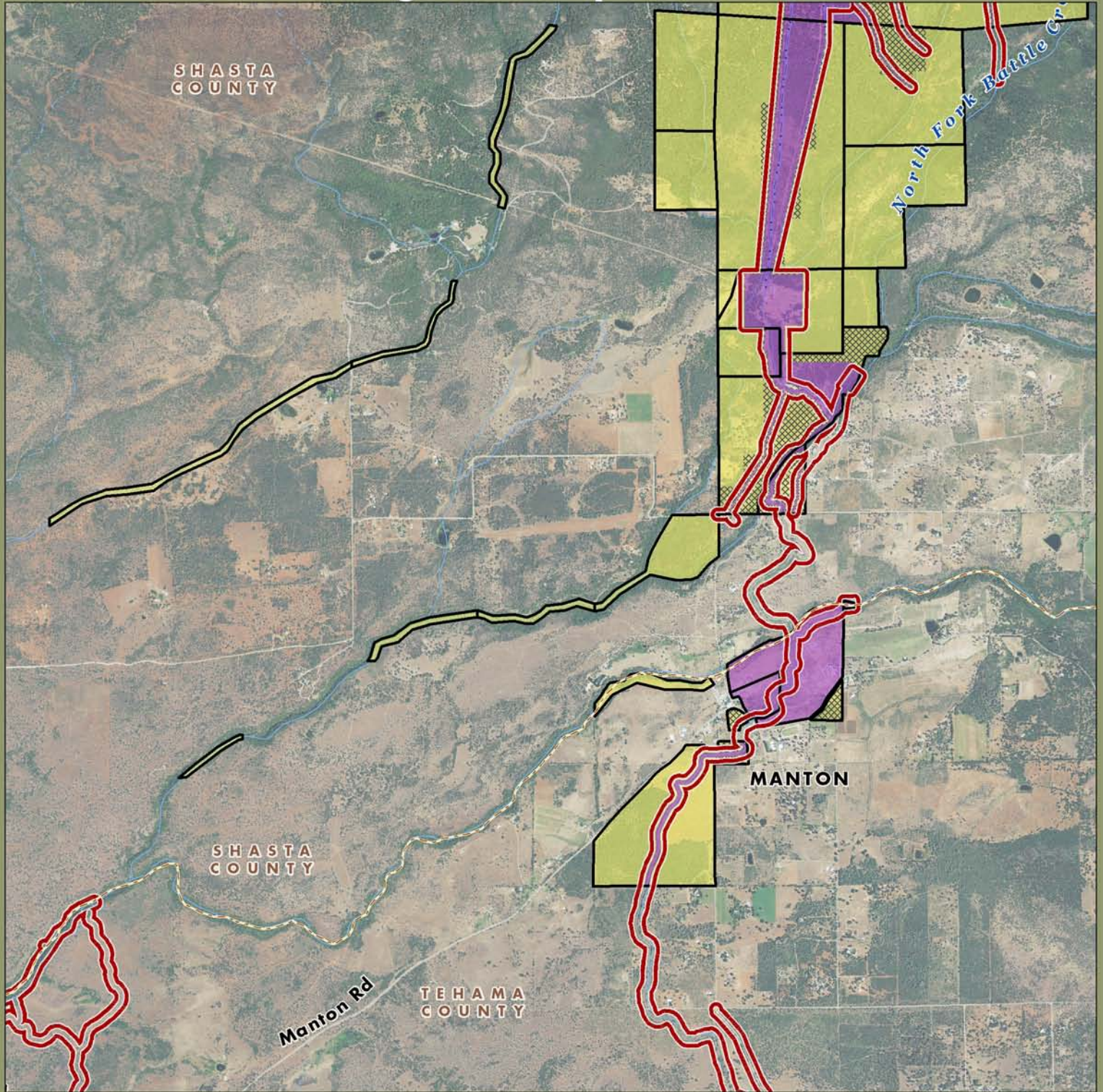
Acreage and location of lands preliminarily designated for retention by PG&E outside the FERC boundary are approximate. FERC boundary is approximate and may change over time.



October 2010
AECOM



Battle Creek Planning Unit: Map 5



 PG&E Lands Preliminarily Designated for Donation

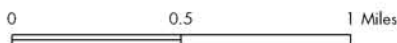
 Certain Considerations May Make Donation Inadvisable

 PG&E Lands Preliminarily Designated for Retention

 FERC Boundary

Imagery: NIAP 2009

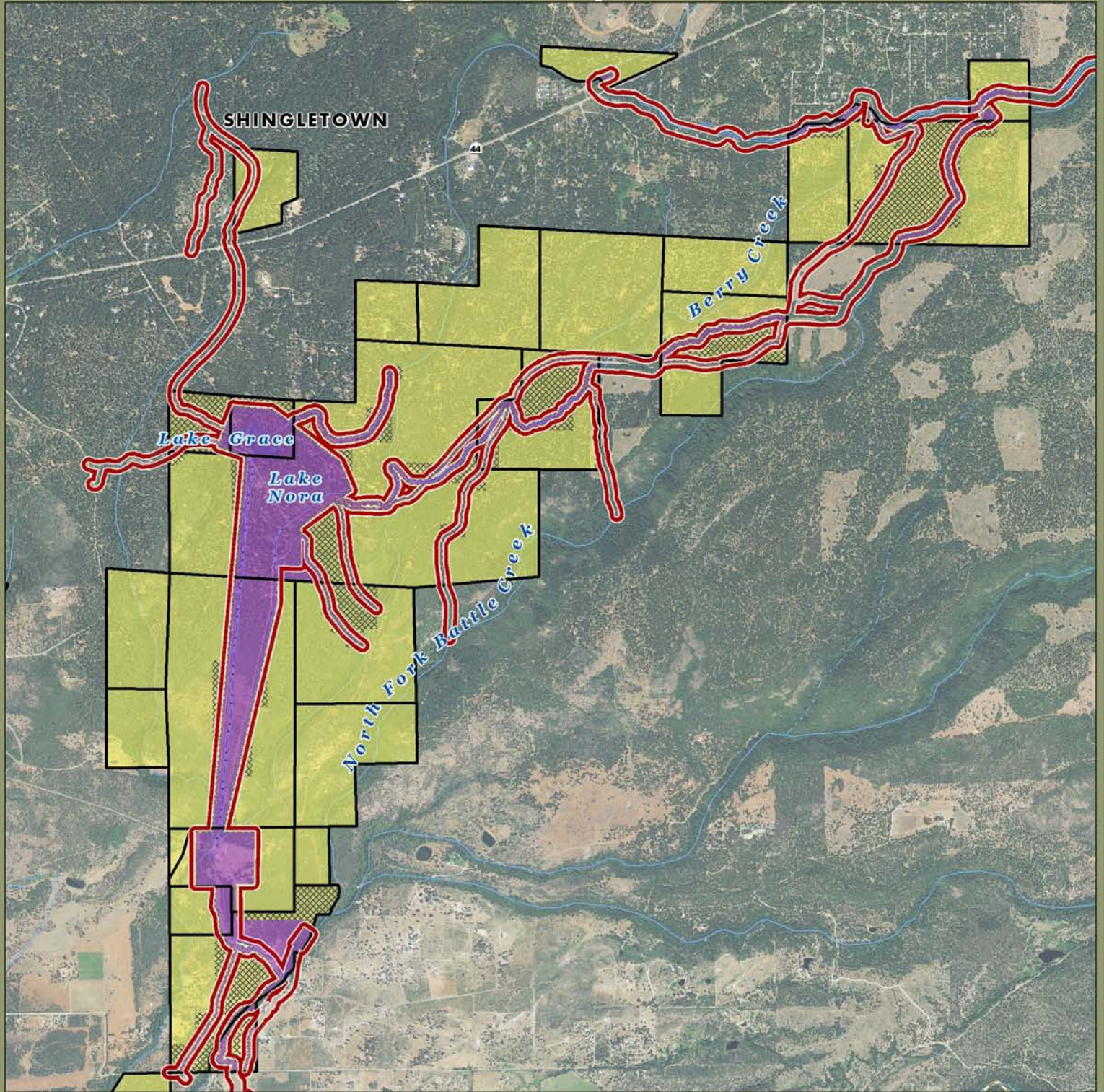
Acreage and location of lands preliminarily designated for retention by PG&E outside the FERC boundary are approximate. FERC boundary is approximate and may change over time.



October 2010
AECOM



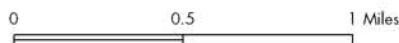
Battle Creek Planning Unit: Map 6



- PG&E Lands Preliminarily Designated for Donation
- Certain Considerations May Make Donation Inadvisable
- PG&E Lands Preliminarily Designated for Retention
- FERC Boundary

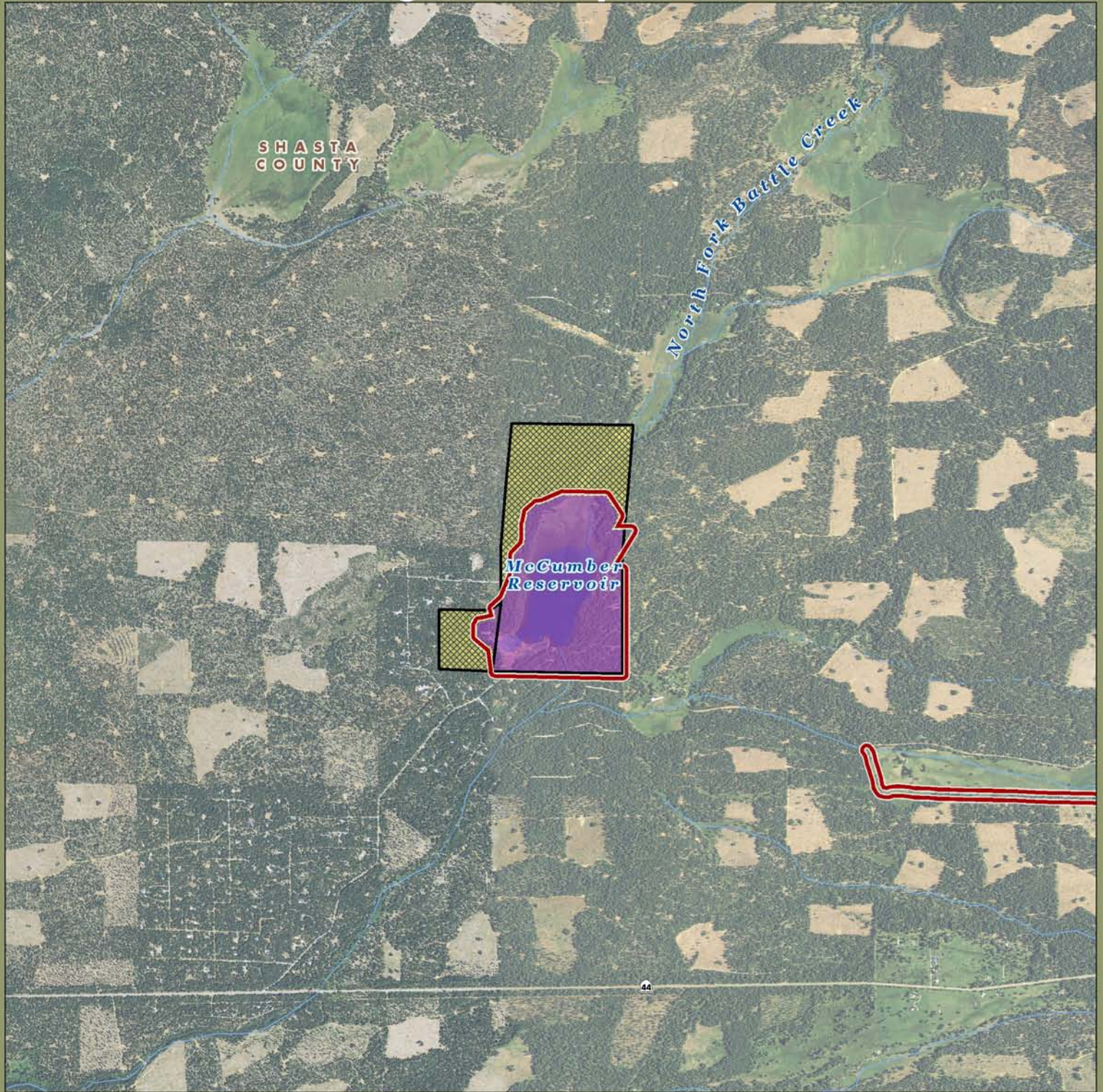
Imagery: NIAP 2009

Acreage and location of lands preliminarily designated for retention by PG&E outside the FERC boundary are approximate. FERC boundary is approximate and may change over time.



October 2010
AECOM





 PG&E Lands Preliminarily Designated for Donation

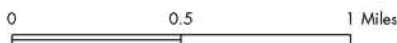
 Certain Considerations May Make Donation Inadvisable

 PG&E Lands Preliminarily Designated for Retention

 FERC Boundary

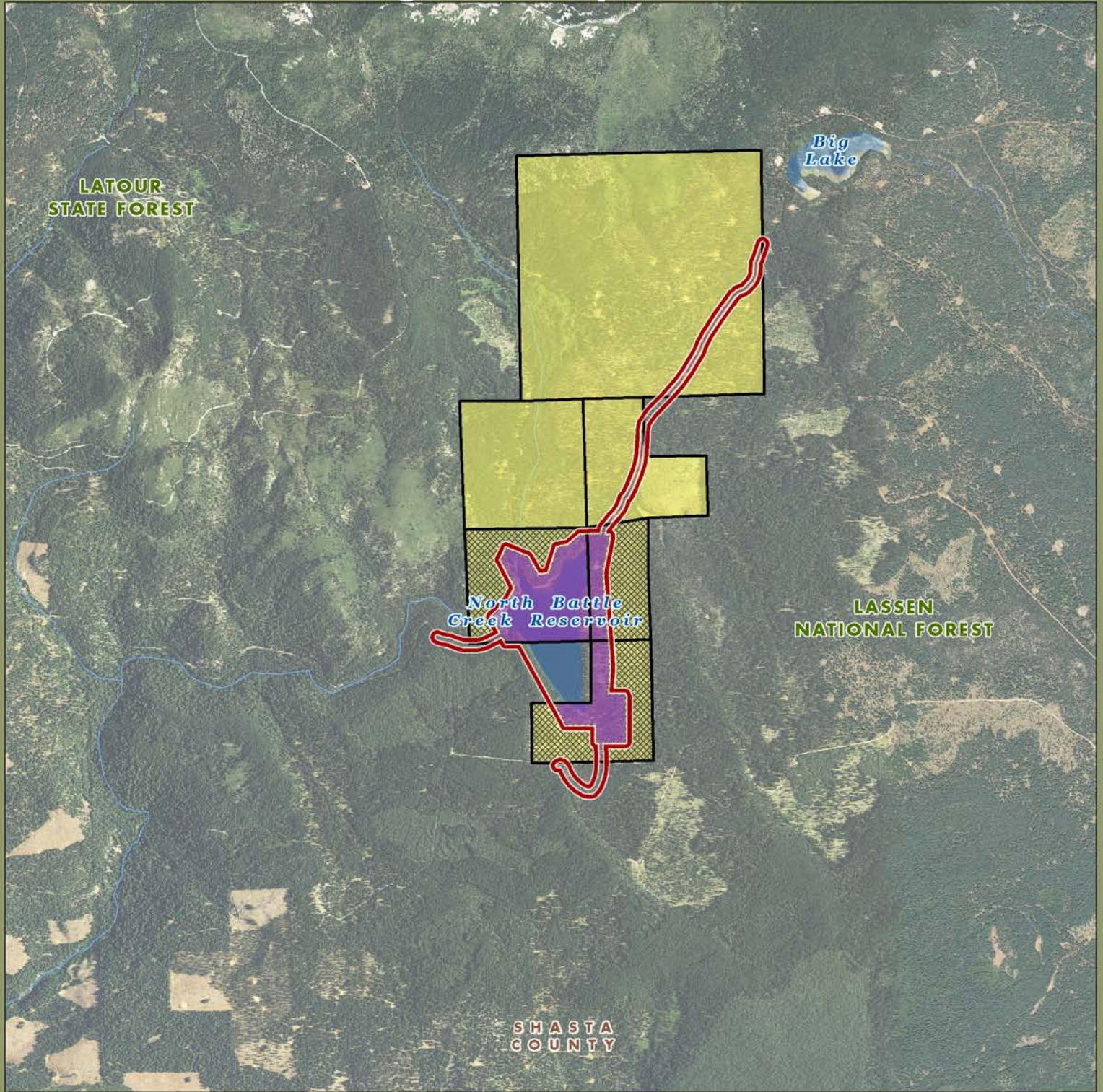
Imagery: NIAP 2009

Acreage and location of lands preliminarily designated for retention by PG&E outside the FERC boundary are approximate. FERC boundary is approximate and may change over time.



October 2010
AECOM





 PG&E Lands Preliminarily Designated for Donation

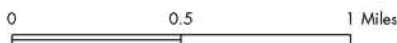
 Certain Considerations May Make Donation Inadvisable

 PG&E Lands Preliminarily Designated for Retention

 FERC Boundary

Imagery: NIAP 2009

Acreage and location of lands preliminarily designated for retention by PG&E outside the FERC boundary are approximate. FERC boundary is approximate and may change over time.



October 2010
AECOM

