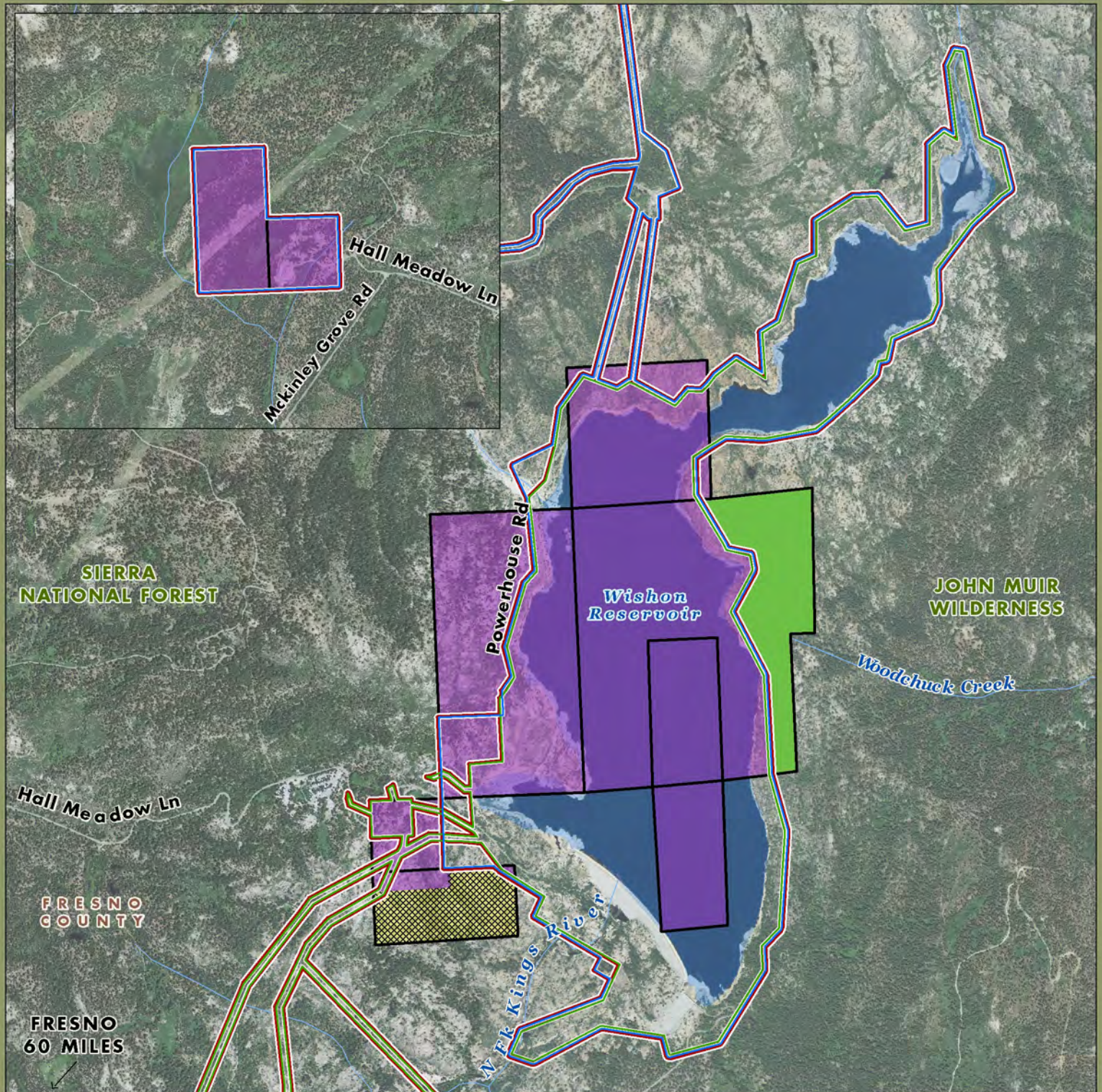


Wishon Reservoir Planning Unit



- PG&E Lands Preliminarily Designated for Donation
- PG&E Lands Preliminarily Designated for Retention
- Land Previously Identified as Available for Donation.
Recommended for Donation to the USFS.
- Constrained Land - Previously Identified as Available for Donation. **Recommended for Retention by PG&E.**
- Haas-Kings River FERC Project
- Helms River FERC Project

Acreage and location of lands preliminarily designated for retention by PG&E outside the FERC boundary are approximate. FERC boundary is approximate and may change over time.