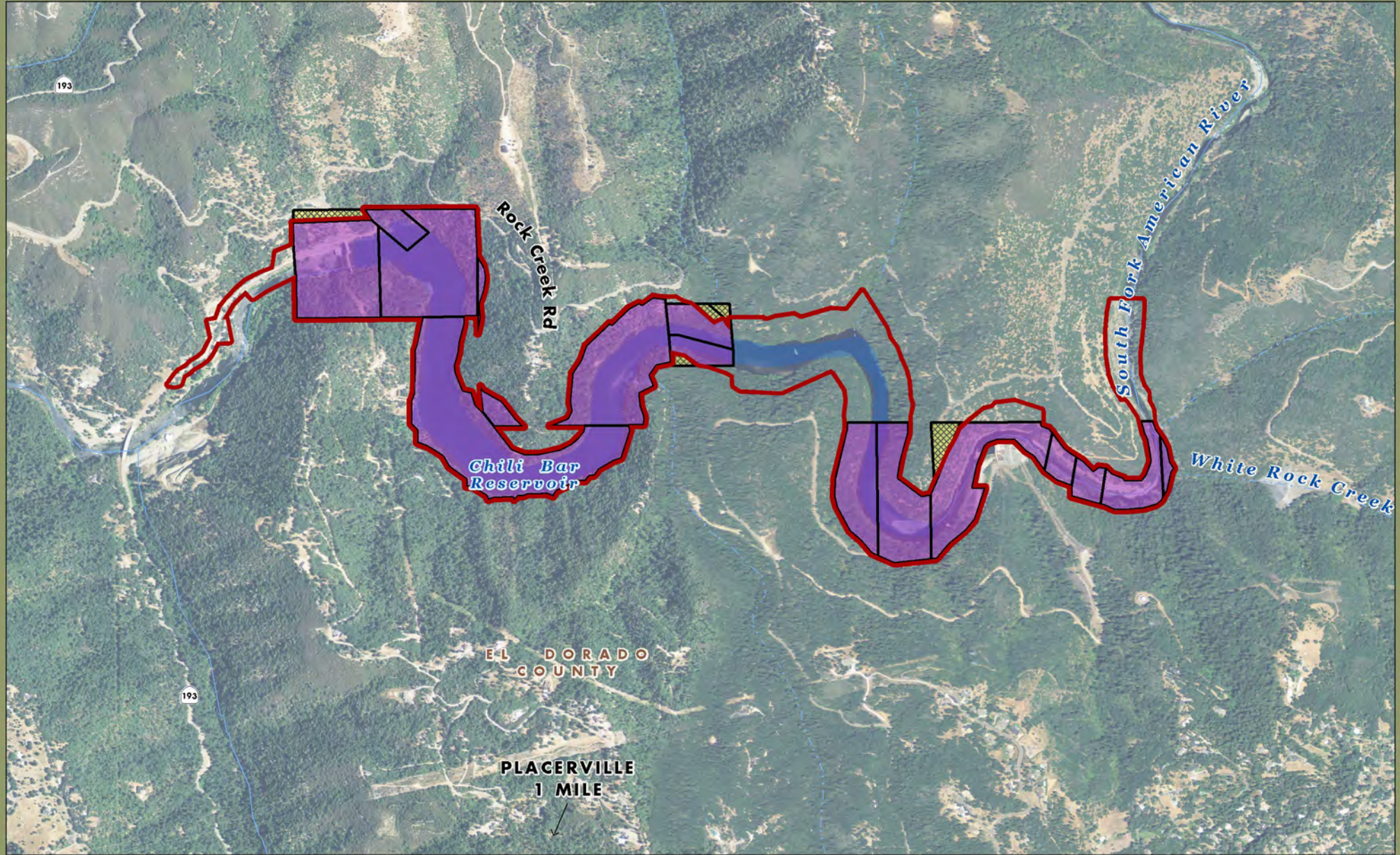


Yuba-Bear River Watershed Chili Bar Planning Unit



- PG&E Lands Preliminarily Designated for Retention
- Constrained Land - Previously Identified as Available for Donation. **Recommended for Retention by PG&E.**

FERC Boundary

0 0.25 0.5 0.75 Miles



Acreage and location of lands preliminarily designated for retention by PG&E outside the FERC boundary are approximate. FERC boundary is approximate and may change over time.

April 2011