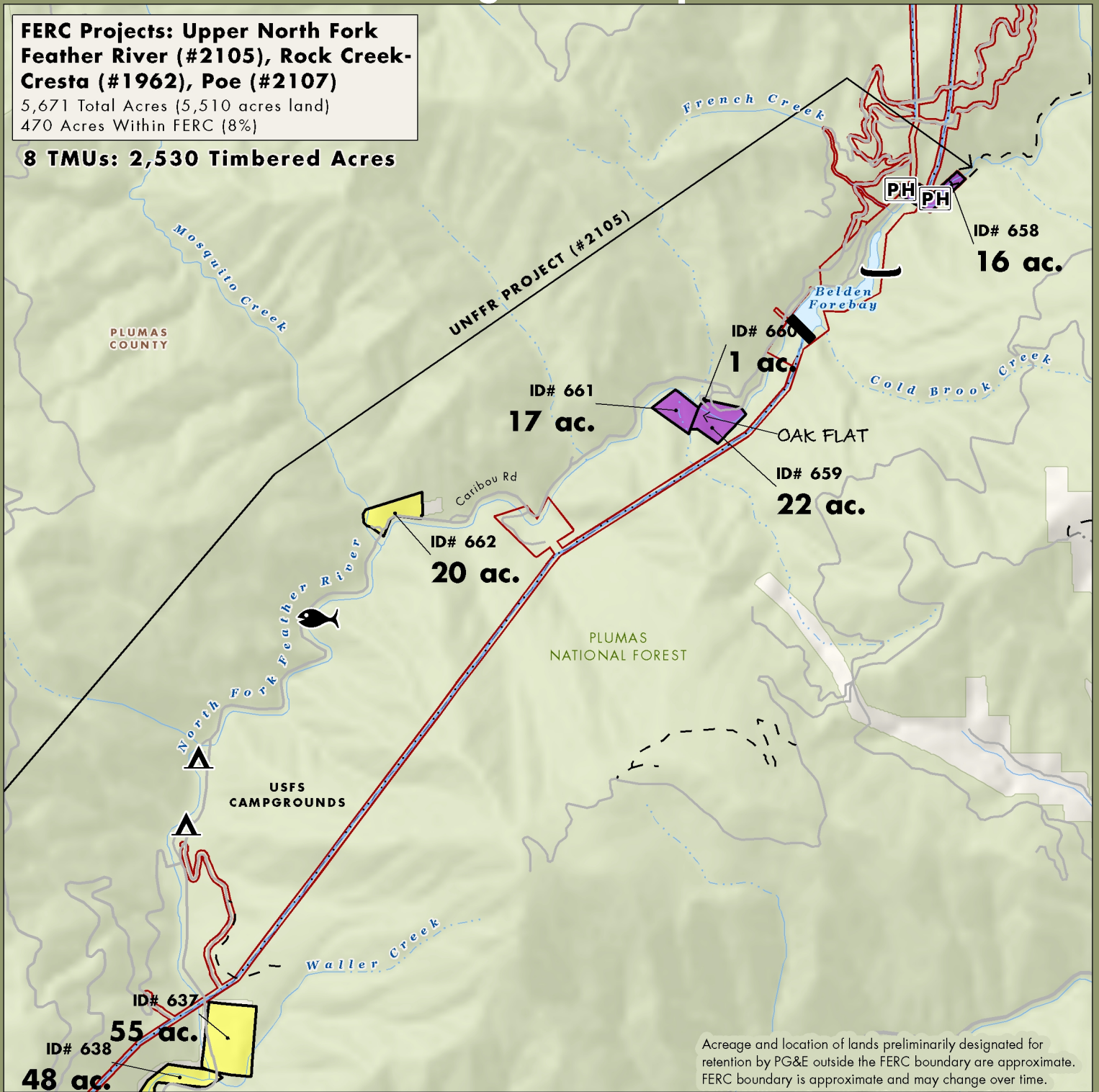


NF Feather River Planning Unit: Map 1

FERC Projects: Upper North Fork Feather River (#2105), Rock Creek-Cresta (#1962), Poe (#2107)

5,671 Total Acres (5,510 acres land)
470 Acres Within FERC (8%)

8 TMUs: 2,530 Timbered Acres



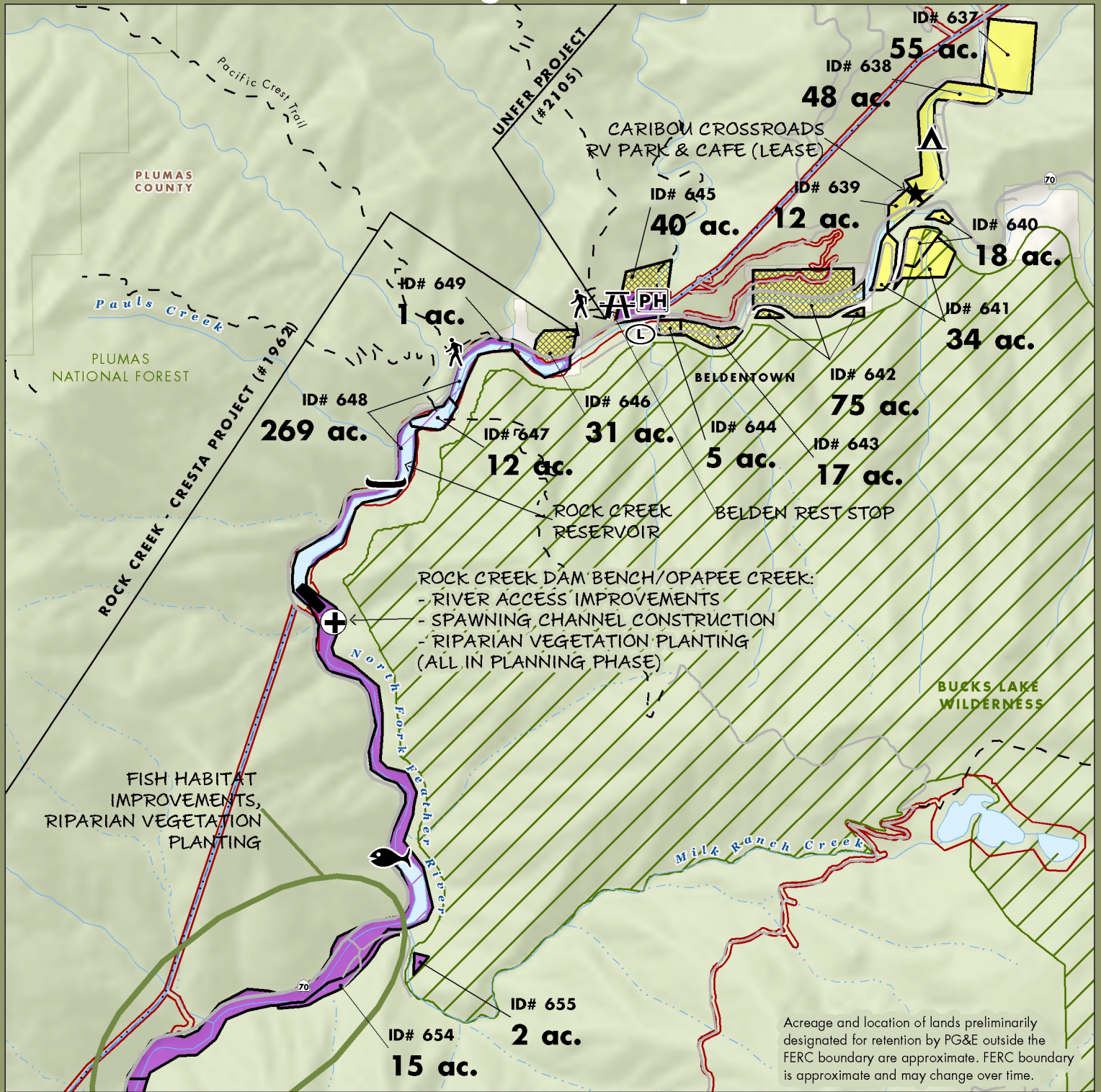
Acreage and location of lands preliminarily designated for retention by PG&E outside the FERC boundary are approximate. FERC boundary is approximate and may change over time.

| | | | |
|--|---------|----------------------------|-----------------------|
| PG&E Lands Preliminarily Designated for Donation | BLM | Boat Launch | Fishing |
| PG&E Lands Preliminarily Designated for Retention | Private | Campground | Lodge |
| PG&E Lands Under Water | State | Dam | Non-Motorized Boating |
| Legal Parcel Boundary and Id Number | USFS | Day Use | Powerhouse |
| Certain Considerations May Make Donation Inadvisable | Trail | Feature of Importance | Trailhead |
| FERC Boundary | | Whitewater Put-In/Take-Out | |

0 0.5 1 1.5 Miles

January 2011

NF Feather River Planning Unit: Map 2

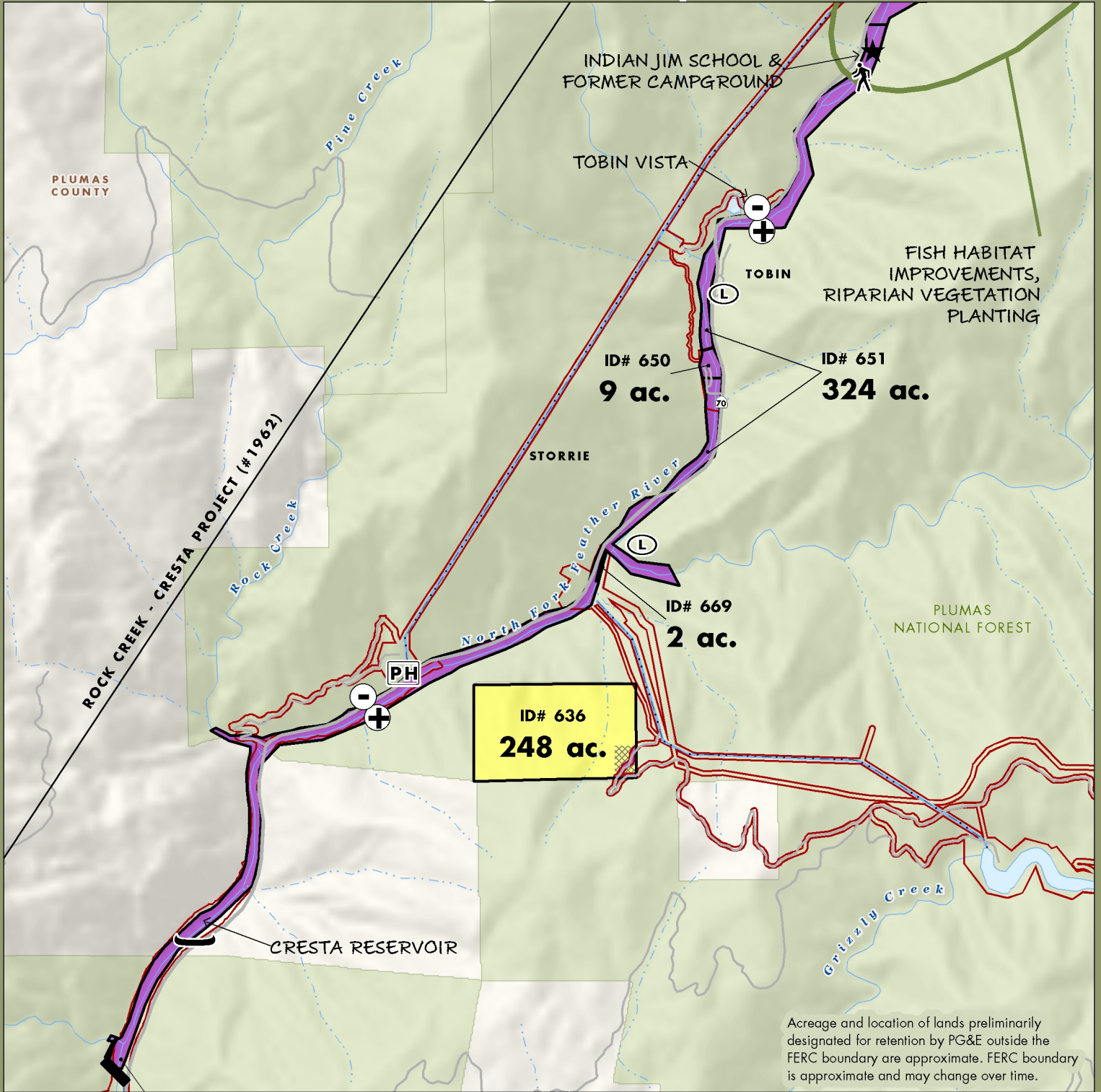


Acres and location of lands preliminarily designated for retention by PG&E outside the FERC boundary are approximate. FERC boundary is approximate and may change over time.

| | | | |
|--|---------|-----------------------|----------------------------|
| PG&E Lands Preliminarily Designated for Donation | BLM | Boat Launch | Fishing |
| PG&E Lands Preliminarily Designated for Retention | Private | Campground | Lodge |
| PG&E Lands Under Water | State | Dam | Non-Motorized Boating |
| Legal Parcel Boundary and Id Number | USFS | Day Use | Powerhouse |
| Certain Considerations May Make Donation Inadvisable | Trail | Trailhead | Whitewater Put-In/Take-Out |
| FERC Boundary | | Feature of Importance | |

January 2011

NF Feather River Planning Unit: Map 3

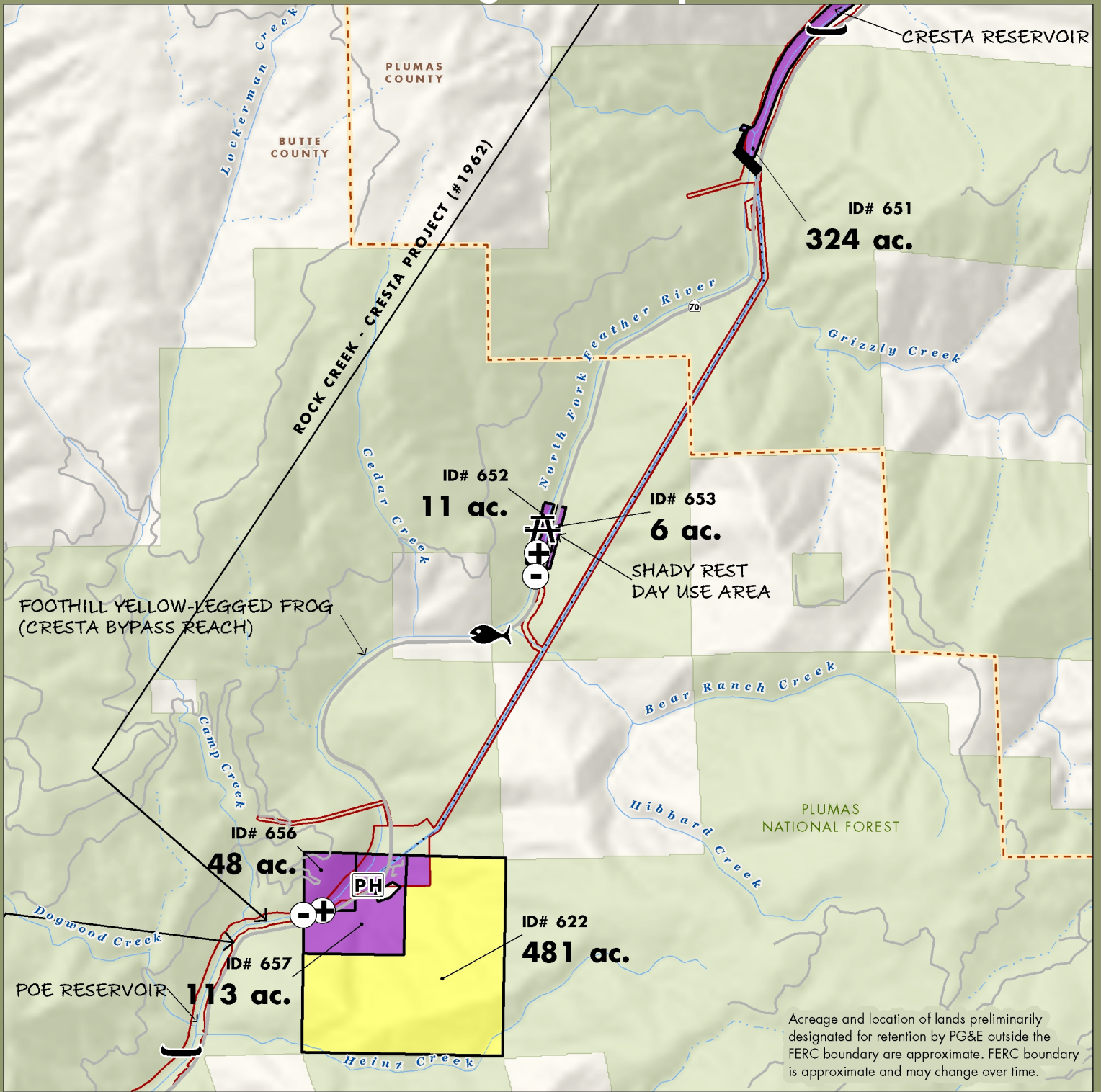


Acreage and location of lands preliminarily designated for retention by PG&E outside the FERC boundary are approximate. FERC boundary is approximate and may change over time.

| | | | |
|--|---------|----------------------------|-----------------------|
| PG&E Lands Preliminarily Designated for Donation | BLM | Boat Launch | Fishing |
| PG&E Lands Preliminarily Designated for Retention | Private | Campground | Lodge |
| PG&E Lands Under Water | State | Dam | Non-Motorized Boating |
| Legal Parcel Boundary and Id Number | USFS | Day Use | Powerhouse |
| Certain Considerations May Make Donation Inadvisable | Trail | Feature of Importance | Trailhead |
| FERC Boundary | | Whitewater Put-In/Take-Out | |

January 2011

NF Feather River Planning Unit: Map 4

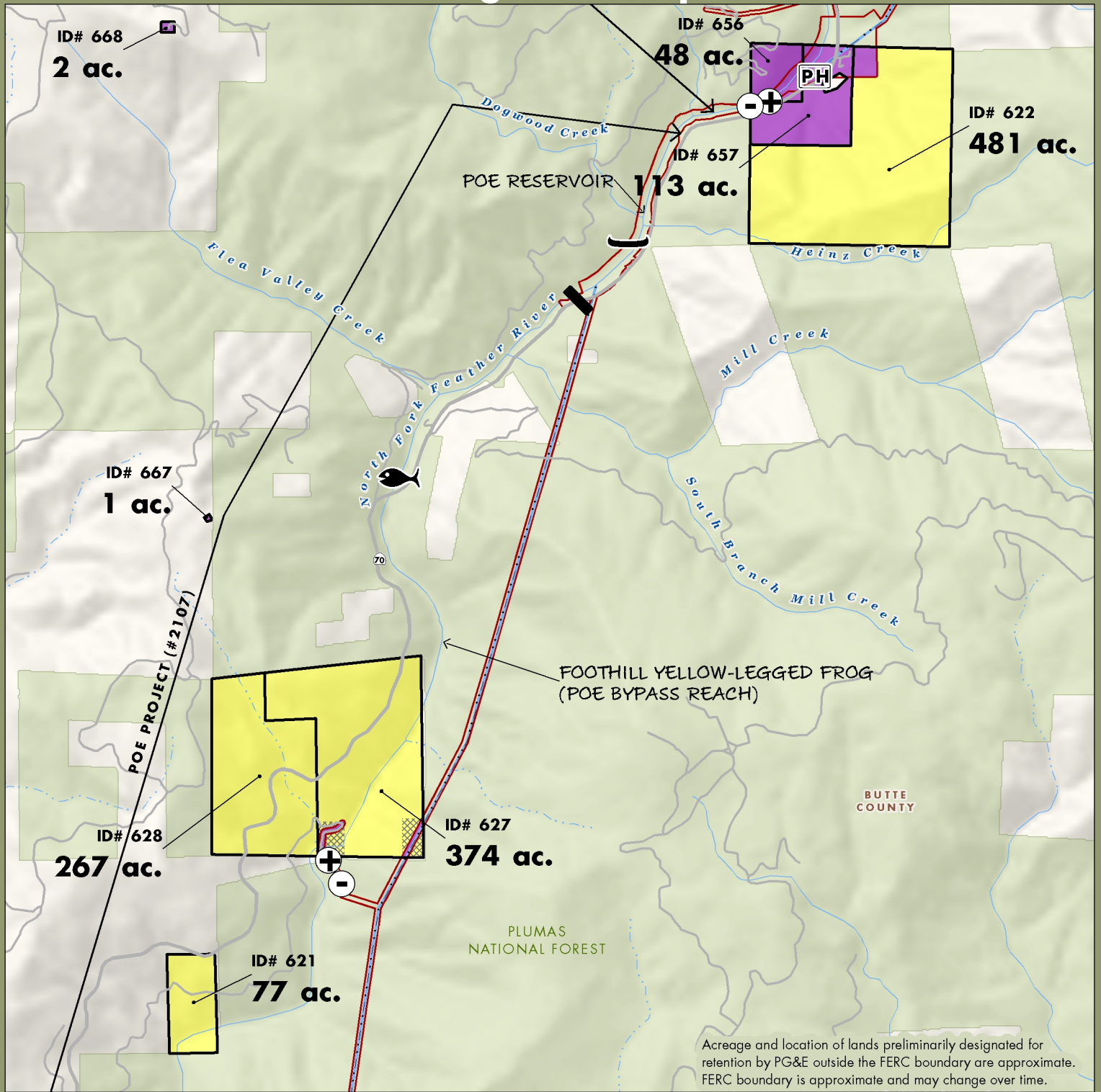


Acreage and location of lands preliminarily designated for retention by PG&E outside the FERC boundary are approximate. FERC boundary is approximate and may change over time.

| | | | |
|--|---------|----------------------------|-----------------------|
| PG&E Lands Preliminarily Designated for Donation | BLM | Boat Launch | Fishing |
| PG&E Lands Preliminarily Designated for Retention | Private | Campground | Lodge |
| PG&E Lands Under Water | State | Dam | Non-Motorized Boating |
| Legal Parcel Boundary and Id Number | USFS | Day Use | Powerhouse |
| Certain Considerations May Make Donation Inadvisable | Trail | Feature of Importance | Trailhead |
| FERC Boundary | | Whitewater Put-In/Take-Out | |

January 2011

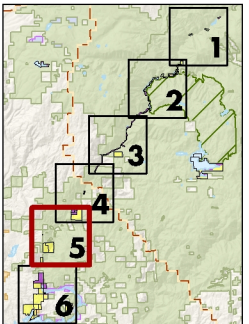
NF Feather River Planning Unit: Map 5



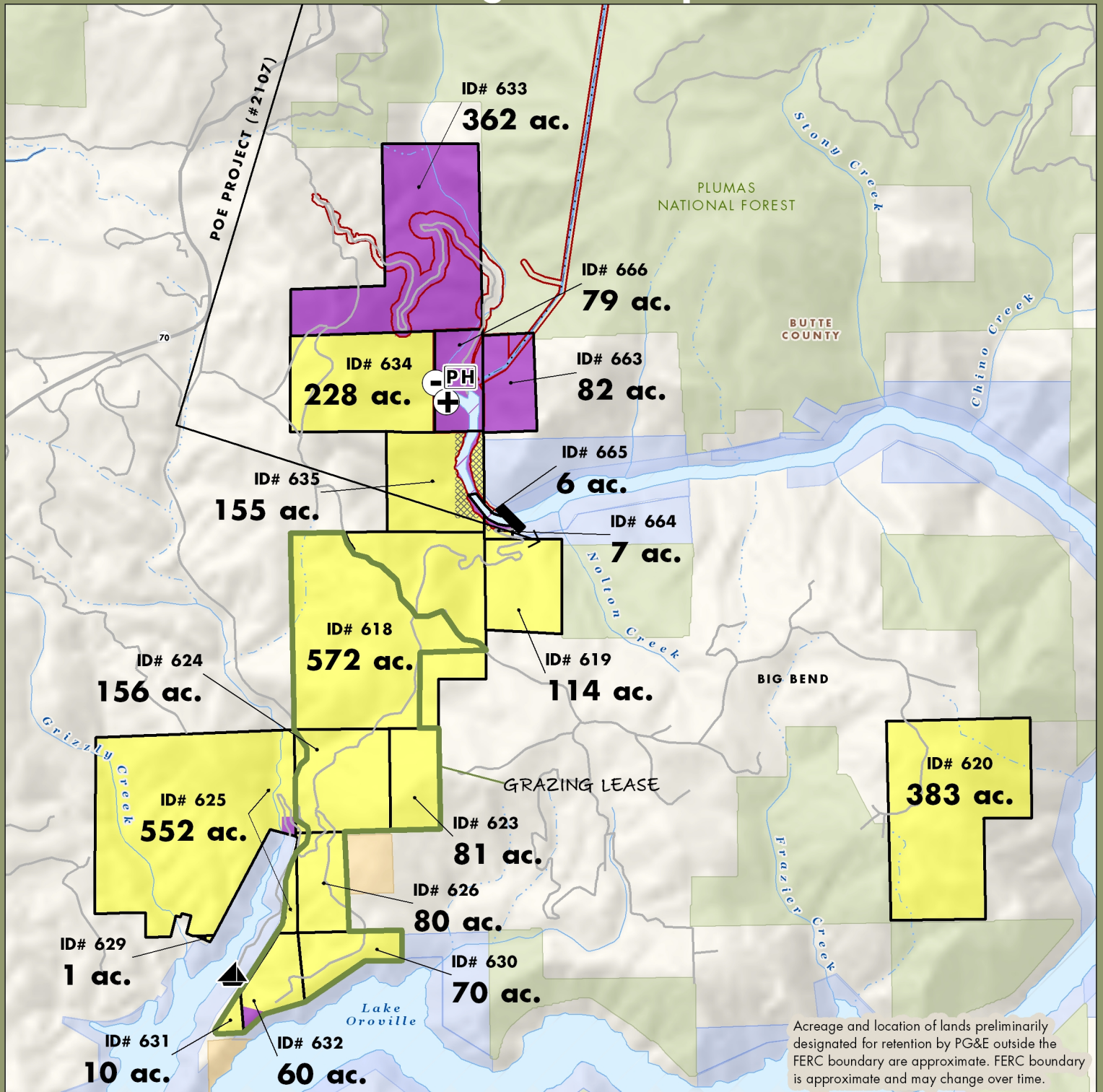
Acreage and location of lands preliminarily designated for retention by PG&E outside the FERC boundary are approximate. FERC boundary is approximate and may change over time.

| | | | |
|--|---------|-----------------------|----------------------------|
| PG&E Lands Preliminarily Designated for Donation | BLM | Boat Launch | Fishing |
| PG&E Lands Preliminarily Designated for Retention | Private | Campground | Lodge |
| PG&E Lands Under Water | State | Dam | Non-Motorized Boating |
| Legal Parcel Boundary and Id Number | USFS | Day Use | Powerhouse |
| Certain Considerations May Make Donation Inadvisable | Trail | Trailhead | Whitewater Put-In/Take-Out |
| FERC Boundary | | Feature of Importance | |

January 2011
AECOM



NF Feather River Planning Unit: Map 6



Acreage and location of lands preliminarily designated for retention by PG&E outside the FERC boundary are approximate. FERC boundary is approximate and may change over time.

| | | | |
|--|---------|-----------------------|----------------------------|
| PG&E Lands Preliminary Designated for Donation | BLM | Boat Launch | Fishing |
| PG&E Lands Preliminary Designated for Retention | Private | Campground | Lodge |
| PG&E Lands Under Water | State | Dam | Non-Motorized Boating |
| Legal Parcel Boundary and Id Number | USFS | Day Use | Powerhouse |
| Certain Considerations May Make Donation Inadvisable | Trail | Trailhead | Whitewater Put-In/Take-Out |
| FERC Boundary | | Feature of Importance | |

Scale: 0 0.5 1 1.5 Miles

January 2011