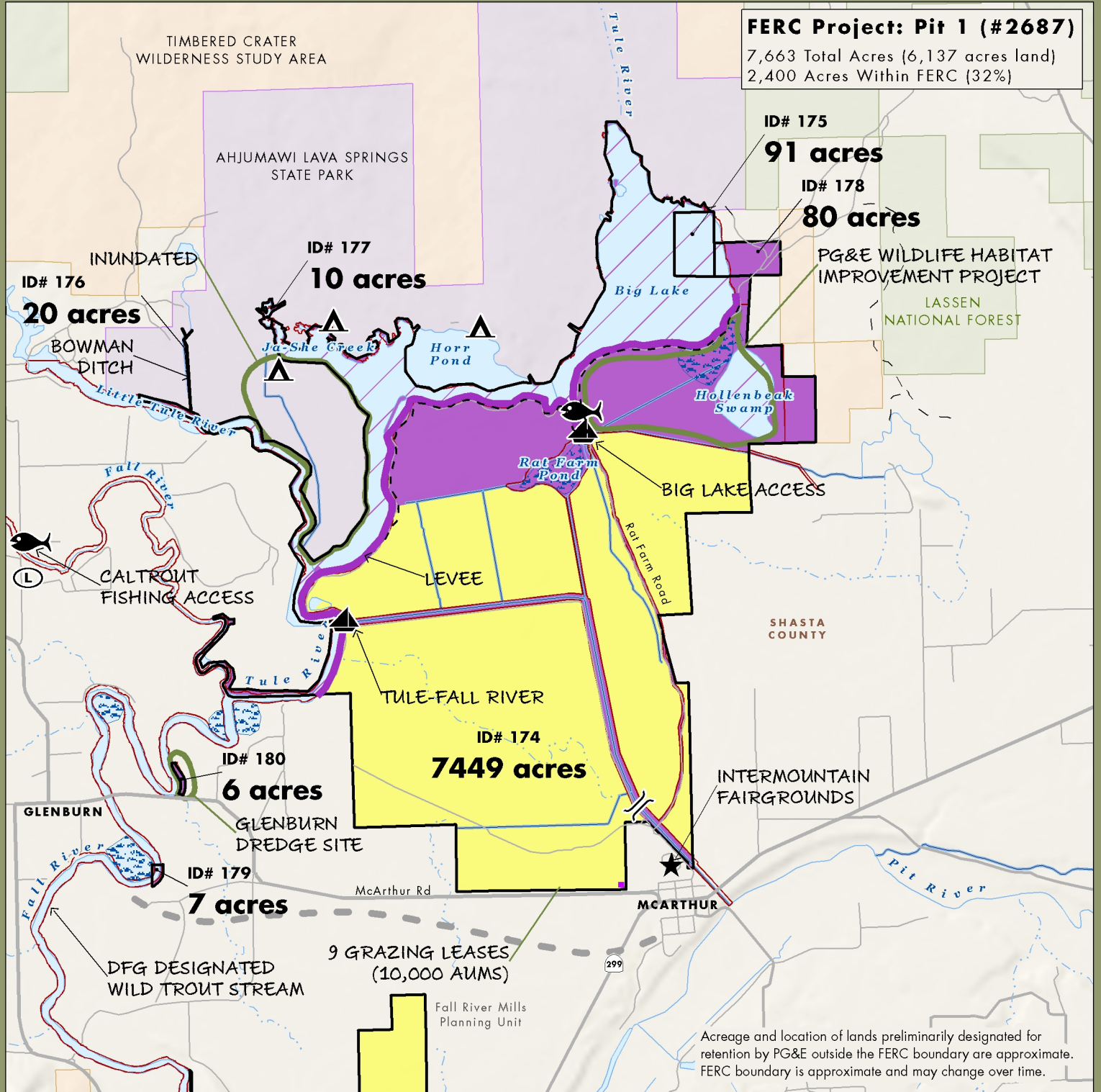


# McArthur Swamp Planning Unit



**FERC Project: Pit 1 (#2687)**  
 7,663 Total Acres (6,137 acres land)  
 2,400 Acres Within FERC (32%)

ID# 175

**91 acres**

ID# 178

**80 acres**

PG&E WILDLIFE HABITAT  
 IMPROVEMENT PROJECT

LASSEN  
 NATIONAL FOREST

BIG LAKE ACCESS

SHASTA  
 COUNTY

INTERMOUNTAIN  
 FAIRGROUNDS

Acree and location of lands preliminarily designated for retention by PG&E outside the FERC boundary are approximate. FERC boundary is approximate and may change over time.

- PG&E Lands Preliminarily Designated for Donation
- PG&E Lands Preliminarily Designated for Retention
- PG&E Lands Under Water
- Legal Parcel Boundary and Id Number

- BLM
- Private
- State
- USFS

- Boat Launch
- Campground
- Feature of Importance
- Fish Access
- Gate
- Lodge

- FERC Boundary
- Wetlands
- Canal / Ditch
- Trail

